



COMPONENTES

Confie e use!

CATÁLOGO 2024



COMPONENTES

Confie e use!

Quem somos

A **RP Componentes** é uma empresa brasileira com mais de 16 anos no mercado de componentes para próteses sobre implantes. Todos os componentes distribuídos pela **RP** possuem características de acoplamento ideais para ter uma conexão segura com os sistemas de implantes.

Para comprovação de sua segurança, eficácia e qualidade, foram realizados testes práticos, mecânicos e biológicos, assegurando que possuem resistência e estabilidade para exercer a função que foram indicados.

Todos os produtos comercializados pela **RP Componentes** são registrados e liberados pela **ANVISA**.

Missão, visão e valores



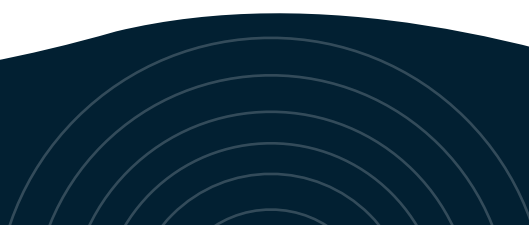
Fornecer produtos com qualidade garantida e certificada.



Apresentar soluções inovadoras, visando atender as necessidades dos profissionais do segmento odontológico.



Determinação e garra
Honestidade e ética
Equilíbrio Emocional
Humildade
Disciplina



Cone Morse

Utilização	Pág.	Utilização	Pág.
Astra Tech® - Sistema CM 3.5/4.0	07	Pross® - Sistema CM 3.5/3.75/4.0/4.3/5.0	23
BioConec® - Sistema CM 3.5/4.3/5.0	08	Signo Vínces® - Sistema CM 3.3/3.8/4.5/4.6	24
Conexão® - Sistema CM 3.5/3.75/4.0	09	SIN®SW (16°) - Sistema CM 3.8/4.5/5.5	25
DentFix® - Sistema CM 3.5/3.75/4.3/5.0	10	SIN® (11,5°) - Sistema CM 3.5/4.3/5.0	26
DentoFlex® - Sistema CM 3.5/3.75/4.0/4.25/5.0	11	Singular® - Sistema CM 3.5/3.75/4.0/4.3/5.0	27
Derig® - Sistema CMH 3.3/3.5/3.75/4.3	12	Systhex® - Sistema CM 3.5/4.3/5.0 Avantt	28
Derig® - Sistema CMI 3.3	13	Straumann® NC - Sistema NC 3.3	29
DSP® - Sistema CM 3.5/3.75/3.8/4.0/4.3/4.5/5.0	14	Straumann® RC - Sistema RC 4.1	30
Implacil de Bortoli® - Sistema CM 3.5/4.3/5.0	15	Straumann® RN - Sistema RN 4.8	31
INP® - Sistema CM 3.3/3.8/4.3/5.0	16	Straumann® WN - Sistema WN 6.5	32
IntraOss® - Sistema CM 3.5/3.75/4.0/4.3	17	Straumann® RB/WB - Sistema RB/WB 3.5 A 6.5	33
Neodent® - Neodent CM 3.5/4.3/5.0	18	Titaniumfix® - Sistema CM 3.5/4.0	34
Neodent® GM - Sistema GM 3.5/3.75/4.0/4.3/5.0/6.0	19	MIS® C1 - Sistema CM 3.75/4.2	35
Nobel Biocare® CC - Sistema CM 3.0 CC	20	Mult Unit® - Sistema 4.8	35
Nobel Biocare® NP® - Sistema CM 3.5 NP	21	Universal	36
Nobel Biocare® RP - Sistema CM 4.3/5.0 RP	22	GT	36

Conexão Externa

Utilização	Pág.	Utilização	Pág.
BioConec® - BioHE 3.75/4.1	38	Medens® - Sistema HE 3.5/4.0/5.0	52
BioConec® - BioHE 3.3	39	Neodent® - Sistema HE 3.3/3.5	53
Bionnovation® - Sistema HE 3.3	39	Neodent® - Sistema HE 3.75/4.0	54
Bionnovation® - Sistema HE 3.3/3.75/4.0/5.0	40	Pi Branemark® - Sistema HE 4.1	55
Conexão® - Sistema HE 3.75/4.0/5.0	41	Pross® - Sistema HE 3.75/4.0/4.3/5.0	56
Conexão® - Sistema HE 3.3/3.5	42	Pross® - Sistema HE 3.5	57
DentFix® - Sistema HE 3.3	42	Signo Vínces® - Sistema HE 3.3/3.25/3.8	57
DentFix® - Sistema HE 3.5/3.75/4.0/5.0	43	Signo Vínces® - Sistema HE 3.75/4.0/4.1/4.6	58
Dentoflex® - Sistema HE 3.25/3.6/3.75/4.0/4.3/4.5/5.0/6.0	44	SIN® - Sistema HE 3.25/3.75/4.0/4.5/5.0	59
Derig® - Sistema HE 3.75/5.0/5.5	45	SIN® - Sistema HE 3.6 À 5.0	60
DSP® - Sistema HE 3.3/3.5/3.8/3.75/4.0/4.3/4.5/5.0	46	Singular® - Sistema HE 3.75/4.0/4.3/5.0	61
DSP® - Sistema HE 3.3	47	Singular® - Sistema HE 3.3/3.5	62
Implacil de Bortoli® - Sistema HE 3.3/3.5	47	Systhex® - Sistema HE 3.3	62
Implus - Baumer® - Sistema HE 3.75/4.0/5.0	48	Systhex® - Sistema HE 3.5/3.75/4.0	63
Implus - Baumer® - Sistema HE 3.3/3.5	49	Restore® - Sistema HE 3.3	64
INP® - Sistema HE 3.5/4.0	50	Mult Unit® - Sistema 4.8	64
IntraOss® - Sistema HE 3.25/3.5/3.75/4.0/4.1/4.3	51		

Conexão Interna

Utilização	Pág.	Utilização	Pág.
Conexão® - Sistema HI 3.75/4.0/4.3/5.0	66	Systhex® - Sistema HI 3.75/4.0/4.3/5.0	70
Dentoflex® - Sistema HI 3.5 A 5.0	66	Titanium Fix® - Sistema HI 3.75/4.0	71
DSP® - Sistema HI 3.8/4.0/4.3/4.5/5.0	67	MIS® - Sistema HI 3.3	71
DSP® - Sistema HI 3.7/4.0/4.5/5.0	67	MIS® Seven - Sistema HI 3.75/4.2	72
Implacil de Bortoli® - Sistema HI 3.3/3.5 - HI Maestro 3.5/4.0/5.0	68	Mult Unit - Sistema 4.8	72
Implacil de Bortoli® - Sistema HI 3.75/4.0/4.3/4.75/5.0	68	Esteticone - Sistema 4.8	73
INP® Conus - Sistema HI 3.5/4.0	69	Uclafix	73
IntraOss® - Sistema HI 3.8/4.5/5.5	69	Overdenture	74
SIN® - Sistema HI 3.8/4.5/5.0	70	Instrumental - Chave digital e torquímetro	75

As referências de produtos de uma empresa são essenciais para ajudar os consumidores a entender e se conectar com os produtos oferecidos.

A **RP Componentes** possui em sua linha referências que seguem uma lógica para facilitar e agilizar o entendimento, abaixo o significado de cada uma.

Para a maioria, os três primeiros números se referem ao tipo de produto.

- | | | | | | |
|-----|---|-------------------------|-----|---|---------------------------|
| 100 | ➔ | <i>Análogo</i> | 600 | ➔ | <i>Ucla Plástica</i> |
| 200 | ➔ | <i>Transfer</i> | 700 | ➔ | <i>Ucla Base Metálica</i> |
| 300 | ➔ | <i>Cicatrizador</i> | 800 | ➔ | <i>Mini Pilar</i> |
| 400 | ➔ | <i>Pilar Provisório</i> | 900 | ➔ | <i>Pilar O'Ring</i> |
| 500 | ➔ | <i>Pilar Definitivo</i> | | | |



Os três números seguintes se referem à família de produtos.

- | | | | | | | | | |
|-----|---|--------------------------|-----|---|------------------|-----|---|-----------------------|
| 703 | ➔ | <i>CM 3.5/4.3/5.0 ND</i> | 105 | ➔ | <i>HE 4.1 BR</i> | 209 | ➔ | <i>HI 3.75/4.3 UN</i> |
|-----|---|--------------------------|-----|---|------------------|-----|---|-----------------------|



Outras famílias de produtos

- | | | |
|-----|---|-------------------------------------|
| 004 | ➔ | <i>Componentes sobre Esteticone</i> |
| 005 | ➔ | <i>Componentes sobre Mini Pilar</i> |
| 007 | ➔ | <i>Componentes sobre Pilar GT</i> |

A seguir dos seis números iniciais, há uma letra, ela tem o seguinte significado:

Para Transfer indica se a moldeira é aberta ou fechada

- | | | | | | |
|-----------------|---|----------|------------------|---|----------|
| Moldeira Aberta | ➔ | A | Moldeira Fechada | ➔ | B |
|-----------------|---|----------|------------------|---|----------|



Para Cicatrizadores e Mini Pilares indica a altura de cinta:

Cinta 1mm ou 0.8mm para alguns sistemas → **A**

Cinta 2mm ou 1.5mm para alguns sistemas → **B**

Cinta 3mm ou 2.5mm para alguns sistemas → **C**

Cinta 4mm ou 3.5mm para alguns sistemas → **D**

Cinta 5mm ou 4.5mm para alguns sistemas → **E**

Cinta 6mm ou 5.5mm para alguns sistemas → **F**

Para qualquer tipo de pilar, indica se é componente com travamento ou sem.

Com Travamento Anti-Rotacional → **C**

Sem Travamento Rotacional → **S**

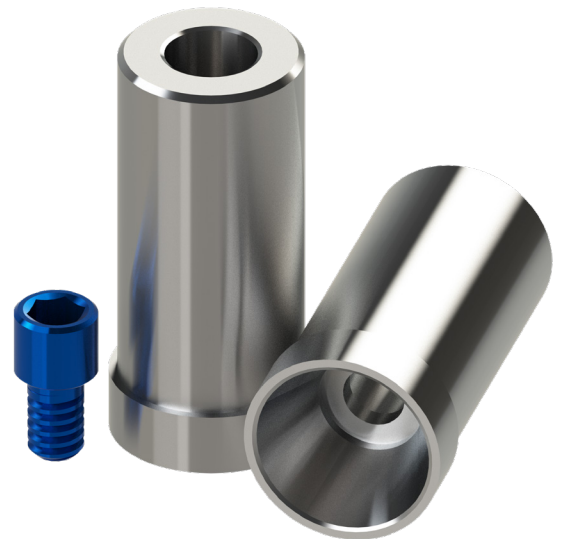
Exemplo de código:

6 0 0 1 0 5 C

Com travamento/ Anti-Rotacional
 Família de produtos HE 4.1
 Tipo de produto: Ucla Plástica

7 0 7 0 3 C C

Cinta 2.5mm
 Com travamento/ Anti-Rotacional
 Família de produtos CM ND
 Tipo de produto: Ucla Base Metálica



Quando o pilar possui além do travamento ou não, altura de cinta, cai o primeiro zero, ou seja, 700 vira 70 e inclui-se a letra correspondente à cinta no final.

Sistema Cone Morse

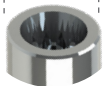


Análogo

100701



Ø3.5 / 4.0mm



Rosca M1.6



Transfer
mold. Aberta
200701A



Transfer
mold. Fechada
200701B



Cicatrizador



300701B	H2mm
300701C	H3mm
300701D	H4mm
300701E	H5mm
300701F	H6mm



Pilar
Provisório

- 400701C
- 400701S



Pilar Definitivo

500701A	H1mm
500701B	H2mm
500701C	H3mm
500701D	H4mm



Ucla
Base Metálica

- 700701C
- 700701S



Mini pilar
Cônico



800701A	H1mm
800701B	H2mm
800701C	H3mm
800701D	H4mm
800701E	H5mm
800701F	H6mm



Parafuso
de Fixação

MI6HAT



Pilar definitivo - Âng. 15°

50701AG	H1mm
50701BG	H2mm
50701CG	H3mm



Pilar definitivo - Âng. 25°

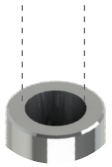
50701AH	H1mm
50701BH	H2mm
50701CH	H3mm



Análogo
100703



Ø2.5mm



- Rosca M1.8
- Ângulação Interna de 11.5°



Transfer
mold. Aberta
200703A



Transfer
mold. Fechada
200703B



Cicatrizador
Tampa
301703



Cicatrizador



Ø3.3		Ø4.5	
300703A	H0.8mm	300704A	H0.8mm
300703B	H1.5mm	300704B	H1.5mm
300703C	H2.5mm	300704C	H2.5mm
300703D	H3.5mm	300704D	H3.5mm
300703E	H4.5mm	300704E	H4.5mm
300703F	H5.5mm	300704F	H5.5mm



Pilar
Provisório



40703CA	40703SA	H0.8mm
40703CB	40703SB	H1.5mm
40703CC	40703SC	H2.5mm



Ucla Base
Metálica



70703CA	70703SA	H0.8mm
70703CB	70703SB	H1.5mm
70703CC	70703SC	H2.5mm



Mini pilar
Cônico



800703A	H0.8mm	800703D	H3.5mm
800703B	H1.5mm	800703E	H4.5mm
800703C	H2.5mm	800703F	H5.5mm



Mini Pilar - Âng. 17°



Mini Pilar - Âng. 30°

80703BG	H1.5mm	80703BH	H1.5mm
80703CG	H2.5mm	80703CH	H2.5mm
80703DG	H3.5mm	80703DH	H3.5mm



Pilar
O'Ring



900703A	H0.8mm
900703B	H1.5mm
900703C	H2.5mm
900703D	H3.5mm
900703E	H4.5mm
900703F	H5.5mm



Pilar GT



801007A	H0.8mm	801007D	H3.5mm
801007B	H1.5mm	801007E	H4.5mm
801007C	H2.5mm	801007F	H5.5mm



Parafuso
de Fixação
M18HND



Pilar
Universal



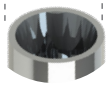
50708DA	Ø3.3 x 4mm - H0.8mm	50709DA	Ø4.5 x 4mm - H0.8mm	50708FA	Ø3.3 x 6mm - H0.8mm	50709FA	Ø4.5 x 6mm - H0.8mm
50708DB	Ø3.3 x 4mm - H1.5mm	50709DB	Ø4.5 x 4mm - H1.5mm	50708FB	Ø3.3 x 6mm - H1.5mm	50709FB	Ø4.5 x 6mm - H1.5mm
50708DC	Ø3.3 x 4mm - H2.5mm	50709DC	Ø4.5 x 4mm - H2.5mm	50708FC	Ø3.3 x 6mm - H2.5mm	50709FC	Ø4.5 x 6mm - H2.5mm
50708DD	Ø3.3 x 4mm - H3.5mm	50709DD	Ø4.5 x 4mm - H3.5mm	50708FD	Ø3.3 x 6mm - H3.5mm	50709FD	Ø4.5 x 6mm - H3.5mm
50708DE	Ø3.3 x 4mm - H4.5mm	50709DE	Ø4.5 x 4mm - H4.5mm	50708FE	Ø3.3 x 6mm - H4.5mm	50709FE	Ø4.5 x 6mm - H4.5mm
50708DF	Ø3.3 x 4mm - H5.5mm	50709DF	Ø4.5 x 4mm - H5.5mm	50708FF	Ø3.3 x 6mm - H5.5mm	50709FF	Ø4.5 x 6mm - H5.5mm



Análogo
100705



Ø3.5 / 3.75 / 4.0mm



Rosca M1.6



Transfer
mold. Aberta

200705A



Transfer
mold. Fechada

200705B



Cicatrizador



Ø3.6

300700A	H0.8mm
300700B	H1.5mm
300700C	H2.5mm
300700D	H3.5mm
300700E	H4.5mm
300700F	H5.5mm

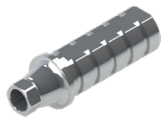


Cicatrizador



Ø4.5

300705A	H0.8mm
300705B	H1.5mm
300705C	H2.5mm
300705D	H3.5mm
300705E	H4.5mm
300705F	H5.5mm



Pilar
Provisório

● 400705C ○ 400705S



Pilar
Definitivo

500705A	H1.5mm
500705B	H2.5mm
500705C	H3.5mm
500705D	H4.5mm



Pilar Definitivo - Âng. 15°

50705AG	H1.5mm
50705BG	H2.5mm
50705CG	H3.5mm

Pilar Definitivo - Âng. 25°

50705AH	H1.5mm
50705BH	H2.5mm
50705CH	H3.5mm



Ucla Base
Metálica

● 700705C ○ 700705S



Mini Pilar
Cônico



800705A	H0.8mm
800705B	H1.5mm
800705C	H2.5mm
800705D	H3.5mm
800705E	H4.5mm
800705F	H5.5mm



Mini Pilar - Âng. 17°

80705CG	H2.5mm
80705DG	H3.5mm



Mini Pilar - Âng. 30°

80705DH	H3.5mm
80705EH	H4.5mm



Pilar
O'Ring



900705A	H0.8mm
900705B	H1.5mm
900705C	H2.5mm
900705D	H3.5mm
900705E	H4.5mm
900705F	H5.5mm



Parafuso
de Fixação

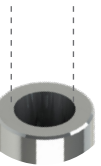
○ M16HCN



Análogo
100703



Ø2.5mm



- Rosca M1.8
- Ângulação Interna de 11.5°



Transfer
mold. Aberta
200703A



Transfer
mold. Fechada
200703B



Cicatrizador
Tampa
301703



Cicatrizador
200703A



Ø3.3		Ø4.5	
300703A	H0.8mm	300704A	H0.8mm
300703B	H1.5mm	300704B	H1.5mm
300703C	H2.5mm	300704C	H2.5mm
300703D	H3.5mm	300704D	H3.5mm
300703E	H4.5mm	300704E	H4.5mm
300703F	H5.5mm	300704F	H5.5mm



Pilar
Provisório



40703CA	40703SA	H0.8mm
40703CB	40703SB	H1.5mm
40703CC	40703SC	H2.5mm



Ucla Base
Metálica



70703CA	70703SA	H0.8mm
70703CB	70703SB	H1.5mm
70703CC	70703SC	H2.5mm



Mini pilar
Cônico



800703A	H0.8mm	800703D	H3.5mm
800703B	H1.5mm	800703E	H4.5mm
800703C	H2.5mm	800703F	H5.5mm



Mini Pilar - Âng. 17°



Mini Pilar - Âng. 30°

80703BG	H1.5mm	80703BH	H1.5mm
80703CG	H2.5mm	80703CH	H2.5mm
80703DG	H3.5mm	80703DH	H3.5mm



Pilar
O'Ring



900703A	H0.8mm
900703B	H1.5mm
900703C	H2.5mm
900703D	H3.5mm
900703E	H4.5mm
900703F	H5.5mm



Pilar GT



801007A	H0.8mm	801007D	H3.5mm
801007B	H1.5mm	801007E	H4.5mm
801007C	H2.5mm	801007F	H5.5mm



Parafuso
de Fixação
M18HND



Pilar
Universal



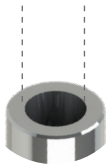
50708DA	Ø3.3 x 4mm - H0.8mm	50709DA	Ø4.5 x 4mm - H0.8mm	50708FA	Ø3.3 x 6mm - H0.8mm	50709FA	Ø4.5 x 6mm - H0.8mm
50708DB	Ø3.3 x 4mm - H1.5mm	50709DB	Ø4.5 x 4mm - H1.5mm	50708FB	Ø3.3 x 6mm - H1.5mm	50709FB	Ø4.5 x 6mm - H1.5mm
50708DC	Ø3.3 x 4mm - H2.5mm	50709DC	Ø4.5 x 4mm - H2.5mm	50708FC	Ø3.3 x 6mm - H2.5mm	50709FC	Ø4.5 x 6mm - H2.5mm
50708DD	Ø3.3 x 4mm - H3.5mm	50709DD	Ø4.5 x 4mm - H3.5mm	50708FD	Ø3.3 x 6mm - H3.5mm	50709FD	Ø4.5 x 6mm - H3.5mm
50708DE	Ø3.3 x 4mm - H4.5mm	50709DE	Ø4.5 x 4mm - H4.5mm	50708FE	Ø3.3 x 6mm - H4.5mm	50709FE	Ø4.5 x 6mm - H4.5mm
50708DF	Ø3.3 x 4mm - H5.5mm	50709DF	Ø4.5 x 4mm - H5.5mm	50708FF	Ø3.3 x 6mm - H5.5mm	50709FF	Ø4.5 x 6mm - H5.5mm



Análogo
100703



Ø2.5mm



- Rosca M1.8
- Ângulação Interna de 11.5°



Transfer
mold. Aberta
200703A



Transfer
mold. Fechada
200703B



Cicatrizador
Tampa
301703



Cicatrizador
300703A



Ø3.3		Ø4.5	
300703A	H0.8mm	300704A	H0.8mm
300703B	H1.5mm	300704B	H1.5mm
300703C	H2.5mm	300704C	H2.5mm
300703D	H3.5mm	300704D	H3.5mm
300703E	H4.5mm	300704E	H4.5mm
300703F	H5.5mm	300704F	H5.5mm



Pilar
Provisório



40703CA	40703SA	H0.8mm
40703CB	40703SB	H1.5mm
40703CC	40703SC	H2.5mm



Ucla Base
Metálica



70703CA	70703SA	H0.8mm
70703CB	70703SB	H1.5mm
70703CC	70703SC	H2.5mm



Mini pilar
Cônico



800703A	H0.8mm	800703D	H3.5mm
800703B	H1.5mm	800703E	H4.5mm
800703C	H2.5mm	800703F	H5.5mm



Mini Pilar - Âng. 17°



Mini Pilar - Âng. 30°

80703BG	H1.5mm	80703BH	H1.5mm
80703CG	H2.5mm	80703CH	H2.5mm
80703DG	H3.5mm	80703DH	H3.5mm



Pilar
O'Ring



900703A	H0.8mm
900703B	H1.5mm
900703C	H2.5mm
900703D	H3.5mm
900703E	H4.5mm
900703F	H5.5mm



Pilar GT



801007A	H0.8mm	801007D	H3.5mm
801007B	H1.5mm	801007E	H4.5mm
801007C	H2.5mm	801007F	H5.5mm



Parafuso
de Fixação
M18HND



Pilar
Universal



50708DA	Ø3.3 x 4mm - H0.8mm	50709DA	Ø4.5 x 4mm - H0.8mm	50708FA	Ø3.3 x 6mm - H0.8mm	50709FA	Ø4.5 x 6mm - H0.8mm
50708DB	Ø3.3 x 4mm - H1.5mm	50709DB	Ø4.5 x 4mm - H1.5mm	50708FB	Ø3.3 x 6mm - H1.5mm	50709FB	Ø4.5 x 6mm - H1.5mm
50708DC	Ø3.3 x 4mm - H2.5mm	50709DC	Ø4.5 x 4mm - H2.5mm	50708FC	Ø3.3 x 6mm - H2.5mm	50709FC	Ø4.5 x 6mm - H2.5mm
50708DD	Ø3.3 x 4mm - H3.5mm	50709DD	Ø4.5 x 4mm - H3.5mm	50708FD	Ø3.3 x 6mm - H3.5mm	50709FD	Ø4.5 x 6mm - H3.5mm
50708DE	Ø3.3 x 4mm - H4.5mm	50709DE	Ø4.5 x 4mm - H4.5mm	50708FE	Ø3.3 x 6mm - H4.5mm	50709FE	Ø4.5 x 6mm - H4.5mm
50708DF	Ø3.3 x 4mm - H5.5mm	50709DF	Ø4.5 x 4mm - H5.5mm	50708FF	Ø3.3 x 6mm - H5.5mm	50709FF	Ø4.5 x 6mm - H5.5mm



Análogo
100320



Ø3.5mm



Rosca M1.6



Transfer
mold. Aberta
200320A



Transfer
mold. Fechada
200320B



Cicatrizador



Ø3.6

300320B	H2mm
300320C	H3mm
300320D	H4mm
300320E	H5mm
300320F	H6mm

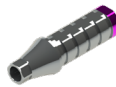


Cicatrizador



Ø5.0

300323B	H2mm
300323C	H3mm
300323D	H4mm
300323E	H5mm
300323F	H6mm



Pilar
Provisório



40320CA	40320SA	H0.8mm
40320CB	40320SB	H1.5 mm
40320CC	40320SC	H2.5mm
40320CD	40320SD	H3.5mm



Pilar
Definitivo

500320A	H0.8mm
500320B	H1.5mm
500320C	H2.5mm
500320D	H3.5mm

Pilar Definitivo – Âng. 15°



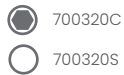
50320AG	H1.5mm
50320BG	H2.5mm
50320CG	H3.5mm

Pilar Definitivo – Âng. 25°

50320AH	H1.5mm
50320BH	H2.5mm
50320CH	H3.5mm



Ucla Base
Metálica



700320C
700320S



Mini Pilar
Cônico



800320A	H0.8mm
800320B	H1.5mm
800320C	H2.5mm
800320D	H3.5mm
800320E	H4.5mm
800320F	H5.5mm



Mini Pilar – Âng. 17°

80320CG	H2.5mm
80320DG	H3.5mm



Mini Pilar – Âng. 30°

80320DH	H3.5mm
80320EH	H4.5mm



Cicatrizador
Tampa
301320



Parafuso
de Fixação

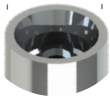
- MI6HEB
- ⊛ MI6UEB



Análogo
100750



Ø3.5mm



Rosca M1.6



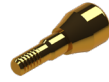
Transfer
mold. Aberta
200750A



Transfer
mold. Fechada
200750B



Cicatrizador
Tampa
301750



Cicatrizador



300750B	H2mm
300750C	H3.5mm
300750E	H5mm
300750F	H6mm



Pilar
Provisório

400750C 400750S



Ucla Base
Metálica

700750C
700750S



Mini Pilar
Cônico



800750A	H1mm
800750B	H2mm
800750C	H3mm
800750D	H4mm
800750E	H5mm
800750F	H6mm



Mini Pilar - Âng. 17°

80750BG	H2mm
80750CG	H3mm
80750DG	H4mm



Mini Pilar - Âng. 30°

80750CH	H3mm
80750DH	H4mm



Pilar O'Ring



900750B	H2mm
900750C	H3.5mm
900750E	H5mm
900750F	H6mm



Parafuso
de Fixação



M16TNC

Prótese cimentada

Análogo
CI



10750DD	Ø3.5 x 4mm
10750DF	Ø3.5 x 5.5mm
10750ED	Ø5 x 4mm
10750EF	Ø5 x 5.5mm



Pilar
Definitivo CI

5750DDA	Ø3.5 x 4mm - H1mm
5750DDB	Ø3.5 x 4mm - H2mm
5750DDC	Ø3.5 x 4mm - H3mm
5750DFA	Ø3.5 x 5.5mm - H1mm
5750DFB	Ø3.5 x 5.5mm - H2mm
5750DFC	Ø3.5 x 5.5mm - H3mm

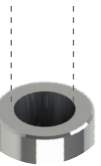
5750EDA	Ø5 x 4mm - H1mm
5750EDB	Ø5 x 4mm - H2mm
5750EDC	Ø5 x 4mm - H3mm
5750EFA	Ø5 x 5.5mm - H1mm
5750EFB	Ø5 x 5.5mm - H2mm
5750EFC	Ø5 x 5.5mm - H3mm



Análogo
100703



Ø2.5mm



- Rosca M1.8
- Ângulação Interna de 11.5°



Transfer
mold. Aberta
200703A



Transfer
mold. Fechada
200703B



Cicatrizador
Tampa
301703



Cicatrizador



Ø3.3

Ø4.5

300703A	H0.8mm	300704A	H0.8mm
300703B	H1.5mm	300704B	H1.5mm
300703C	H2.5mm	300704C	H2.5mm
300703D	H3.5mm	300704D	H3.5mm
300703E	H4.5mm	300704E	H4.5mm
300703F	H5.5mm	300704F	H5.5mm



Pilar
Provisório



40703CA	40703SA	H0.8mm
40703CB	40703SB	H1.5mm
40703CC	40703SC	H2.5mm



Ucla Base
Metálica



70703CA	70703SA	H0.8mm
70703CB	70703SB	H1.5mm
70703CC	70703SC	H2.5mm



Mini pilar
Cônico



800703A	H0.8mm	800703D	H3.5mm
800703B	H1.5mm	800703E	H4.5mm
800703C	H2.5mm	800703F	H5.5mm



Mini Pilar - Âng. 17°



Mini Pilar - Âng. 30°

80703BG	H1.5mm	80703BH	H1.5mm
80703CG	H2.5mm	80703CH	H2.5mm
80703DG	H3.5mm	80703DH	H3.5mm



Pilar
O'Ring



900703A	H0.8mm
900703B	H1.5mm
900703C	H2.5mm
900703D	H3.5mm
900703E	H4.5mm
900703F	H5.5mm



Pilar GT



801007A	H0.8mm	801007D	H3.5mm
801007B	H1.5mm	801007E	H4.5mm
801007C	H2.5mm	801007F	H5.5mm



Parafuso
de Fixação
M18HND



Pilar
Universal



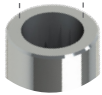
50708DA	Ø3.3 x 4mm - H0.8mm	50709DA	Ø4.5 x 4mm - H0.8mm	50708FA	Ø3.3 x 6mm - H0.8mm	50709FA	Ø4.5 x 6mm - H0.8mm
50708DB	Ø3.3 x 4mm - H1.5mm	50709DB	Ø4.5 x 4mm - H1.5mm	50708FB	Ø3.3 x 6mm - H1.5mm	50709FB	Ø4.5 x 6mm - H1.5mm
50708DC	Ø3.3 x 4mm - H2.5mm	50709DC	Ø4.5 x 4mm - H2.5mm	50708FC	Ø3.3 x 6mm - H2.5mm	50709FC	Ø4.5 x 6mm - H2.5mm
50708DD	Ø3.3 x 4mm - H3.5mm	50709DD	Ø4.5 x 4mm - H3.5mm	50708FD	Ø3.3 x 6mm - H3.5mm	50709FD	Ø4.5 x 6mm - H3.5mm
50708DE	Ø3.3 x 4mm - H4.5mm	50709DE	Ø4.5 x 4mm - H4.5mm	50708FE	Ø3.3 x 6mm - H4.5mm	50709FE	Ø4.5 x 6mm - H4.5mm
50708DF	Ø3.3 x 4mm - H5.5mm	50709DF	Ø4.5 x 4mm - H5.5mm	50708FF	Ø3.3 x 6mm - H5.5mm	50709FF	Ø4.5 x 6mm - H5.5mm



Análogo
100714



Ø2.5mm



Rosca M1.8
Ângulação Interna de 11.5°



Transfer
mold. Aberta
200714A



Transfer
mold. Fechada
200714B



Cicatrizador



Ø3.3		Ø4.5	
300703A	H0.8mm	300704A	H0.8mm
300703B	H1.5mm	300704B	H1.5mm
300703C	H2.5mm	300704C	H2.5mm
300703D	H3.5mm	300704D	H3.5mm
300703E	H4.5mm	300704E	H4.5mm
300703F	H5.5mm	300704F	H5.5mm



Ucla Base
Metálica



70714CA



70714SA

H0.8mm

70714CB

70714SB

H1.5mm

70714CC

70714SC

H2.5mm



Mini Pilar
Cônico



800703A	H0.8mm
800703B	H1.5mm
800703C	H2.5mm
800703D	H3.5mm
800703E	H4.5mm
800703F	H5.5mm



Mini Pilar - Âng. 17°

80714BG	H1.5mm
80714CG	H2.5mm
80714DG	H3.5mm



Mini Pilar - Âng. 30°

80714BH	H1.5mm
80714CH	H2.5mm
80714DH	H3.5mm

*Componentes Sobre o Pilar GT Pá0g.35



Pilar
O'Ring



900703A	H0.8mm
900703B	H1.5mm
900703C	H2.5mm
900703D	H3.5mm
900703E	H4.5mm
900703F	H5.5mm



Parafuso
de Fixação

○ M18HND



Pilar GT



801007A	H0.8mm
801007B	H1.5mm
801007C	H2.5mm
801007D	H3.5mm
801007E	H4.5mm
801007F	H5.5mm

*Componentes Sobre o Pilar Universal Pág.35



Pilar
Universal



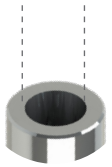
50708DA	Ø3.3 x 4mm - H0.8mm	50708FA	Ø3.3 x 6mm - H0.8mm	50709DA	Ø4.5 x 4mm - H0.8mm	50709FA	Ø4.5 x 6mm - H0.8mm
50708DB	Ø3.3 x 4mm - H1.5mm	50708FB	Ø3.3 x 6mm - H1.5mm	50709DB	Ø4.5 x 4mm - H1.5mm	50709FB	Ø4.5 x 6mm - H1.5mm
50708DC	Ø3.3 x 4mm - H2.5mm	50708FC	Ø3.3 x 6mm - H2.5mm	50709DC	Ø4.5 x 4mm - H2.5mm	50709FC	Ø4.5 x 6mm - H2.5mm
50708DD	Ø3.3 x 4mm - H3.5mm	50708FD	Ø3.3 x 6mm - H3.5mm	50709DD	Ø4.5 x 4mm - H3.5mm	50709FD	Ø4.5 x 6mm - H3.5mm
50708DE	Ø3.3 x 4mm - H4.5mm	50708FE	Ø3.3 x 6mm - H4.5mm	50709DE	Ø4.5 x 4mm - H4.5mm	50709FE	Ø4.5 x 6mm - H4.5mm
50708DF	Ø3.3 x 4mm - H5.5mm	50708FF	Ø3.3 x 6mm - H5.5mm	50709DF	Ø4.5 x 4mm - H5.5mm	50709FF	Ø4.5 x 6mm - H5.5mm



Análogo
100703



Ø2.5 mm



- Rosca M1.8
- Ângulação Interna de 11.5°



Transfer
mold. Aberta
200703A



Transfer
mold. Fechada
200703B



Cicatrizador
Tampa
301703



Cicatrizador
20
N.cm

Ø3.3		Ø4.5	
300703A	H0.8mm	300704A	H0.8mm
300703B	H1.5mm	300704B	H1.5mm
300703C	H2.5mm	300704C	H2.5mm
300703D	H3.5mm	300704D	H3.5mm
300703E	H4.5mm	300704E	H4.5mm
300703F	H5.5mm	300704F	H5.5mm



Pilar
Provisório



40703CA	40703SA	H0.8mm
40703CB	40703SB	H1.5mm
40703CC	40703SC	H2.5mm



Ucla Base
Metálica



70703CA	70703SA	H0.8mm
70703CB	70703SB	H1.5mm
70703CC	70703SC	H2.5mm



Mini pilar
Cônico



800703A	H0.8mm	800703D	H3.5mm
800703B	H1.5mm	800703E	H4.5mm
800703C	H2.5mm	800703F	H5.5mm



Mini Pilar - Âng. 17°



Mini Pilar - Âng. 30°

80703BG	H1.5mm	80703BH	H1.5mm
80703CG	H2.5mm	80703CH	H2.5mm
80703DG	H3.5mm	80703DH	H3.5mm



Pilar
O'Ring



900703A	H0.8mm
900703B	H1.5mm
900703C	H2.5mm
900703D	H3.5mm
900703E	H4.5mm
900703F	H5.5mm



Pilar GT



801007A	H0.8mm	801007D	H3.5mm
801007B	H1.5mm	801007E	H4.5mm
801007C	H2.5mm	801007F	H5.5mm



Parafuso
de Fixação
M18HND



Pilar
Universal



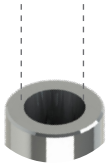
50708DA	Ø3.3 x 4mm - H0.8mm	50709DA	Ø4.5 x 4mm - H0.8mm	50708FA	Ø3.3 x 6mm - H0.8mm	50709FA	Ø4.5 x 6mm - H0.8mm
50708DB	Ø3.3 x 4mm - H1.5mm	50709DB	Ø4.5 x 4mm - H1.5mm	50708FB	Ø3.3 x 6mm - H1.5mm	50709FB	Ø4.5 x 6mm - H1.5mm
50708DC	Ø3.3 x 4mm - H2.5mm	50709DC	Ø4.5 x 4mm - H2.5mm	50708FC	Ø3.3 x 6mm - H2.5mm	50709FC	Ø4.5 x 6mm - H2.5mm
50708DD	Ø3.3 x 4mm - H3.5mm	50709DD	Ø4.5 x 4mm - H3.5mm	50708FD	Ø3.3 x 6mm - H3.5mm	50709FD	Ø4.5 x 6mm - H3.5mm
50708DE	Ø3.3 x 4mm - H4.5mm	50709DE	Ø4.5 x 4mm - H4.5mm	50708FE	Ø3.3 x 6mm - H4.5mm	50709FE	Ø4.5 x 6mm - H4.5mm
50708DF	Ø3.3 x 4mm - H5.5mm	50709DF	Ø4.5 x 4mm - H5.5mm	50708FF	Ø3.3 x 6mm - H5.5mm	50709FF	Ø4.5 x 6mm - H5.5mm



Análogo
100703



Ø2.5 mm



- Rosca M1.8
- Ângulação Interna de 11.5°



Transfer
mold. Aberta
200703A



Transfer
mold. Fechada
200703B



Cicatrizador
Tampa
301703



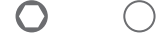
Cicatrizador
300703A



Ø3.3		Ø4.5	
300703A	H0.8mm	300704A	H0.8mm
300703B	H1.5mm	300704B	H1.5mm
300703C	H2.5mm	300704C	H2.5mm
300703D	H3.5mm	300704D	H3.5mm
300703E	H4.5mm	300704E	H4.5mm
300703F	H5.5mm	300704F	H5.5mm



Pilar
Provisório



40703CA	40703SA	H0.8mm
40703CB	40703SB	H1.5mm
40703CC	40703SC	H2.5mm



Ucla Base
Metálica



70703CA	70703SA	H0.8mm
70703CB	70703SB	H1.5mm
70703CC	70703SC	H2.5mm



Mini pilar
Cônico



800703A	H0.8mm	800703D	H3.5mm
800703B	H1.5mm	800703E	H4.5mm
800703C	H2.5mm	800703F	H5.5mm



Mini Pilar - Âng. 17°



Mini Pilar - Âng. 30°

80703BG	H1.5mm	80703BH	H1.5mm
80703CG	H2.5mm	80703CH	H2.5mm
80703DG	H3.5mm	80703DH	H3.5mm



Pilar
O'Ring



900703A	H0.8mm
900703B	H1.5mm
900703C	H2.5mm
900703D	H3.5mm
900703E	H4.5mm
900703F	H5.5mm



Pilar GT



801007A	H0.8mm	801007D	H3.5mm
801007B	H1.5mm	801007E	H4.5mm
801007C	H2.5mm	801007F	H5.5mm



Parafuso
de Fixação
M18HND



Pilar
Universal



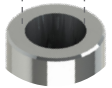
50708DA	Ø3.3 x 4mm - H0.8mm	50709DA	Ø4.5 x 4mm - H0.8mm	50708FA	Ø3.3 x 6mm - H0.8mm	50709FA	Ø4.5 x 6mm - H0.8mm
50708DB	Ø3.3 x 4mm - H1.5mm	50709DB	Ø4.5 x 4mm - H1.5mm	50708FB	Ø3.3 x 6mm - H1.5mm	50709FB	Ø4.5 x 6mm - H1.5mm
50708DC	Ø3.3 x 4mm - H2.5mm	50709DC	Ø4.5 x 4mm - H2.5mm	50708FC	Ø3.3 x 6mm - H2.5mm	50709FC	Ø4.5 x 6mm - H2.5mm
50708DD	Ø3.3 x 4mm - H3.5mm	50709DD	Ø4.5 x 4mm - H3.5mm	50708FD	Ø3.3 x 6mm - H3.5mm	50709FD	Ø4.5 x 6mm - H3.5mm
50708DE	Ø3.3 x 4mm - H4.5mm	50709DE	Ø4.5 x 4mm - H4.5mm	50708FE	Ø3.3 x 6mm - H4.5mm	50709FE	Ø4.5 x 6mm - H4.5mm
50708DF	Ø3.3 x 4mm - H5.5mm	50709DF	Ø4.5 x 4mm - H5.5mm	50708FF	Ø3.3 x 6mm - H5.5mm	50709FF	Ø4.5 x 6mm - H5.5mm



Análogo
100703



Ø2.5mm



- Rosca M1.8
- Ângulação Interna de 11.5°



Transfer
mold. Aberta
200703A



Transfer
mold. Fechada
200703B



Cicatrizador
Tampa
301703



Cicatrizador



Ø3.3		Ø4.5	
300703A	H0.8mm	300704A	H0.8mm
300703B	H1.5mm	300704B	H1.5mm
300703C	H2.5mm	300704C	H2.5mm
300703D	H3.5mm	300704D	H3.5mm
300703E	H4.5mm	300704E	H4.5mm
300703F	H5.5mm	300704F	H5.5mm



Pilar
Provisório



40703CA	40703SA	H0.8mm
40703CB	40703SB	H1.5mm
40703CC	40703SC	H2.5mm



Ucla Base
Metálica



70703CA	70703SA	H0.8mm
70703CB	70703SB	H1.5mm
70703CC	70703SC	H2.5mm



Mini pilar
Cônico



800703A	H0.8mm	800703D	H3.5mm
800703B	H1.5mm	800703E	H4.5mm
800703C	H2.5mm	800703F	H5.5mm



Mini Pilar - Âng. 17°



Mini Pilar - Âng. 30°

80703BG	H1.5mm	80703BH	H1.5mm
80703CG	H2.5mm	80703CH	H2.5mm
80703DG	H3.5mm	80703DH	H3.5mm



Pilar
O'Ring



900703A	H0.8mm
900703B	H1.5mm
900703C	H2.5mm
900703D	H3.5mm
900703E	H4.5mm
900703F	H5.5mm



Pilar GT



801007A	H0.8mm	801007D	H3.5mm
801007B	H1.5mm	801007E	H4.5mm
801007C	H2.5mm	801007F	H5.5mm



Parafuso
de Fixação
M18HND



Pilar
Universal



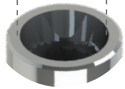
50708DA	Ø3.3 x 4mm - H0.8mm	50709DA	Ø4.5 x 4mm - H0.8mm	50708FA	Ø3.3 x 6mm - H0.8mm	50709FA	Ø4.5 x 6mm - H0.8mm
50708DB	Ø3.3 x 4mm - H1.5mm	50709DB	Ø4.5 x 4mm - H1.5mm	50708FB	Ø3.3 x 6mm - H1.5mm	50709FB	Ø4.5 x 6mm - H1.5mm
50708DC	Ø3.3 x 4mm - H2.5mm	50709DC	Ø4.5 x 4mm - H2.5mm	50708FC	Ø3.3 x 6mm - H2.5mm	50709FC	Ø4.5 x 6mm - H2.5mm
50708DD	Ø3.3 x 4mm - H3.5mm	50709DD	Ø4.5 x 4mm - H3.5mm	50708FD	Ø3.3 x 6mm - H3.5mm	50709FD	Ø4.5 x 6mm - H3.5mm
50708DE	Ø3.3 x 4mm - H4.5mm	50709DE	Ø4.5 x 4mm - H4.5mm	50708FE	Ø3.3 x 6mm - H4.5mm	50709FE	Ø4.5 x 6mm - H4.5mm
50708DF	Ø3.3 x 4mm - H5.5mm	50709DF	Ø4.5 x 4mm - H5.5mm	50708FF	Ø3.3 x 6mm - H5.5mm	50709FF	Ø4.5 x 6mm - H5.5mm



Análogo
100720



Ø3.0mm



Rosca M1.6

Ângulação de Interna de 16°



Transfer mold. Aberta

200720A



Transfer mold. Fechada

200720B



Cicatrizador



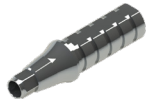
Ø3.3	
300720A	H0.8mm
300720B	H1.5mm
300720C	H2.5mm
300720D	H3.5mm
300720E	H4.5mm
300720F	H5.5mm



Cicatrizador



Ø4.5	
300721A	H0.8mm
300721B	H1.5mm
300721C	H2.5mm
300721D	H3.5mm
300721E	H4.5mm
300721F	H5.5mm



Pilar Provisório



40720CA	40720SA	H0.8mm
40720CB	40720SB	H1.5 mm
40720CC	40720SC	H2.5mm
40720CD	40720SD	H3.5mm

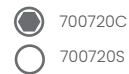


Pilar Definitivo

500720A	H0.8mm
500720B	H1.5mm
500720C	H2.5mm
500720D	H3.5mm
500720E	H4.5mm
500720F	H5.5mm



Ucla Base Metálica



Mini Pilar Cônico



800720A	H0.8mm
800720B	H1.5mm
800720C	H2.5mm
800720D	H3.5mm
800720E	H4.5mm
800720F	H5.5mm



Mini Pilar - Âng. 17°



80720BG	H1.5mm
80720CG	H2.5mm
80720DG	H3.5mm



Mini Pilar - Âng. 30°

80720BH	H1.5mm
80720CH	H2.5mm
80720DH	H3.5mm



Parafuso de Fixação

M16HCAC



Pilar Universal



50701DA	Ø3.3 x 4mm - H0.8mm	50701FA	Ø3.3 x 6mm - H0.8mm	50702DA	Ø4.5 x 4mm - H0.8mm	50702FA	Ø4.5 x 6mm - H0.8mm
50701DB	Ø3.3 x 4mm - H1.5mm	50701FB	Ø3.3 x 6mm - H1.5mm	50702DB	Ø4.5 x 4mm - H1.5mm	50702FB	Ø4.5 x 6mm - H1.5mm
50701DC	Ø3.3 x 4mm - H2.5mm	50701FC	Ø3.3 x 6mm - H2.5mm	50702DC	Ø4.5 x 4mm - H2.5mm	50702FC	Ø4.5 x 6mm - H2.5mm
50701DD	Ø3.3 x 4mm - H3.5mm	50701FD	Ø3.3 x 6mm - H3.5mm	50702DD	Ø4.5 x 4mm - H3.5mm	50702FD	Ø4.5 x 6mm - H3.5mm
50701DE	Ø3.3 x 4mm - H4.5mm	50701FE	Ø3.3 x 6mm - H4.5mm	50702DE	Ø4.5 x 4mm - H4.5mm	50702FE	Ø4.5 x 6mm - H4.5mm
50701DF	Ø3.3 x 4mm - H5.5mm	50701FF	Ø3.3 x 6mm - H5.5mm	50702DF	Ø4.5 x 4mm - H5.5mm	50702FF	Ø4.5 x 6mm - H5.5mm

Análogo

100319



Ø3.0mm



Rosca M1.4



Transfer
mold. Aberta

200319A



Transfer
mold. Fechada

200319B



Cicatrizador
Tampa

301319



Ø3.2

300318B	H2mm
300318C	H3mm
300318D	H4mm
300318E	H5mm
300318F	H6mm

Cicatrizador



Ø3.8

300319B	H2mm
300319C	H3mm
300319D	H4mm
300319E	H5mm
300319F	H6mm

Cicatrizador



Ucla
Base Metálica

-  700319C
-  700319S



Parafuso
de Fixação

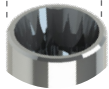
 M14UEB



Análogo
100320



Ø3.5mm



Rosca M1.6



Transfer
mold. Aberta

200320A



Transfer
mold. Fechada

200320B



Cicatrizador
Tampa

301320



Ø3.6

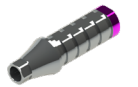
300320B	H2mm
300320C	H3mm
300320D	H4mm
300320E	H5mm
300320F	H6mm

Cicatrizador

Ø5.0

300323B	H2mm
300323C	H3mm
300323D	H4mm
300323E	H5mm
300323F	H6mm

Cicatrizador



Pilar
Provisório

40320CA	40320SA	H0.8mm
40320CB	40320SB	H1.5 mm
40320CC	40320SC	H2.5mm
40320CD	40320SD	H3.5mm



Pilar
Definitivo

500320A	H0.8mm
500320B	H1.5mm
500320C	H2.5mm
500320D	H3.5mm

Pilar Definitivo – Âng. 15°

50320AG	H1.5mm
50320BG	H2.5mm
50320CG	H3.5mm



Pilar Definitivo – Âng. 25°

50320AH	H1.5mm
50320BH	H2.5mm
50320CH	H3.5mm



Ucla Base
Metálica

- 700320C
- 700320S



Mini Pilar
Cônico



800320A	H0.8mm
800320B	H1.5mm
800320C	H2.5mm
800320D	H3.5mm
800320E	H4.5mm
800320F	H5.5mm



Mini Pilar – Âng. 17°

80320CG	H2.5mm
80320DG	H3.5mm



Mini Pilar – Âng. 30°

80320DH	H3.5mm
80320EH	H4.5mm



Parafuso
de Fixação

- M1.6HEB
- ⊗ M1.6UEB



Análogo

100321



Ø4.3mm



Rosca M2.0



Transfer
mold. Aberta

200321A



Transfer
mold. Fechada

200321B



Cicatrizador
Tampa

301321



Cicatrizador



Ø3.6

300321B	H2mm
300321C	H3mm
300321D	H4mm
300321E	H5mm
300321F	H6mm



Cicatrizador



Ø5.0

300322B	H2mm
300322C	H3mm
300322D	H4mm
300322E	H5mm
300322F	H6mm



Pilar
Provisório



40321CA	40321SA	H0.8mm
40321CB	40321SB	H1.5 mm
40321CC	40321SC	H2.5mm
40321CD	40321SD	H3.5mm



Pilar
Definitivo

500321A	H0.8mm
500321B	H1.5mm
500321C	H2.5mm
500321D	H3.5mm



Pilar Definitivo - Âng. 15°

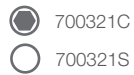
50321AG	H1.5mm
50321BG	H2.5mm
50321CG	H3.5mm

Pilar Definitivo - Âng. 25°

50321AH	H1.5mm
50321BH	H2.5mm
50321CH	H3.5mm



Ucla Base
Metálica



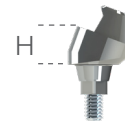
700321C
700321S



Mini Pilar
Cônico



800321A	H0.8mm
800321B	H1.5mm
800321C	H2.5mm
800321D	H3.5mm
800321E	H4.5mm
800321F	H5.5mm



Mini Pilar - Âng. 17°

80321CG	H2.5mm
80321DG	H3.5mm



Mini Pilar - Âng. 30°

80321DH	H3.5mm
80321EH	H4.5mm



Parafuso
de Fixação

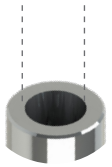
- M20HEB
- ⊕ M20UEB



Análogo
100703



Ø2.5mm



- Rosca M1.8
- Ângulação Interna de 11.5°



Transfer
mold. Aberta
200703A



Transfer
mold. Fechada
200703B



Cicatrizador
Tampa
301703



Cicatrizador



Ø3.3		Ø4.5	
300703A	H0.8mm	300704A	H0.8mm
300703B	H1.5mm	300704B	H1.5mm
300703C	H2.5mm	300704C	H2.5mm
300703D	H3.5mm	300704D	H3.5mm
300703E	H4.5mm	300704E	H4.5mm
300703F	H5.5mm	300704F	H5.5mm



Pilar
Provisório



40703CA	40703SA	H0.8mm
40703CB	40703SB	H1.5mm
40703CC	40703SC	H2.5mm



Ucla Base
Metálica



70703CA	70703SA	H0.8mm
70703CB	70703SB	H1.5mm
70703CC	70703SC	H2.5mm



Mini pilar
Cônico



800703A	H0.8mm	800703D	H3.5mm
800703B	H1.5mm	800703E	H4.5mm
800703C	H2.5mm	800703F	H5.5mm



Mini Pilar - Âng. 17°



Mini Pilar - Âng. 30°

80703BG	H1.5mm	80703BH	H1.5mm
80703CG	H2.5mm	80703CH	H2.5mm
80703DG	H3.5mm	80703DH	H3.5mm



Pilar
O'Ring



900703A	H0.8mm
900703B	H1.5mm
900703C	H2.5mm
900703D	H3.5mm
900703E	H4.5mm
900703F	H5.5mm



Pilar
GT



801007A	H0.8mm	801007D	H3.5mm
801007B	H1.5mm	801007E	H4.5mm
801007C	H2.5mm	801007F	H5.5mm



Parafuso
de Fixação
M18HND



Pilar
Universal



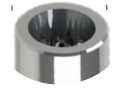
50708DA	Ø3.3 x 4mm - H0.8mm	50709DA	Ø4.5 x 4mm - H0.8mm	50708FA	Ø3.3 x 6mm - H0.8mm	50709FA	Ø4.5 x 6mm - H0.8mm
50708DB	Ø3.3 x 4mm - H1.5mm	50709DB	Ø4.5 x 4mm - H1.5mm	50708FB	Ø3.3 x 6mm - H1.5mm	50709FB	Ø4.5 x 6mm - H1.5mm
50708DC	Ø3.3 x 4mm - H2.5mm	50709DC	Ø4.5 x 4mm - H2.5mm	50708FC	Ø3.3 x 6mm - H2.5mm	50709FC	Ø4.5 x 6mm - H2.5mm
50708DD	Ø3.3 x 4mm - H3.5mm	50709DD	Ø4.5 x 4mm - H3.5mm	50708FD	Ø3.3 x 6mm - H3.5mm	50709FD	Ø4.5 x 6mm - H3.5mm
50708DE	Ø3.3 x 4mm - H4.5mm	50709DE	Ø4.5 x 4mm - H4.5mm	50708FE	Ø3.3 x 6mm - H4.5mm	50709FE	Ø4.5 x 6mm - H4.5mm
50708DF	Ø3.3 x 4mm - H5.5mm	50709DF	Ø4.5 x 4mm - H5.5mm	50708FF	Ø3.3 x 6mm - H5.5mm	50709FF	Ø4.5 x 6mm - H5.5mm



Análogo
100701



Ø3.5 / 4.0mm



Rosca M1.6



Transfer
mold. Aberta
200701A



Transfer
mold. Fechada
200701B



Cicatrizador



300701B	H2mm
300701C	H3mm
300701D	H4mm
300701E	H5mm
300701F	H6mm



Pilar
Provisório

- 400701C
- 400701S



Pilar Definitivo

500701A	H1mm
500701B	H2mm
500701C	H3mm
500701D	H4mm



Ucla
Base Metálica

- 700701C
- 700701S



Mini pilar
Cônico



800701A	H1mm
800701B	H2mm
800701C	H3mm
800701D	H4mm
800701E	H5mm
800701F	H6mm



Parafuso
de Fixação

- MI6HAT



Pilar definitivo - Âng. 15°

50701AG	H1mm
50701BG	H2mm
50701CG	H3mm

Pilar definitivo - Âng. 25°

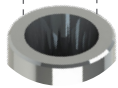
50701AH	H1mm
50701BH	H2mm
50701CH	H3mm

Análogo

100712



Ø2.72mm



Rosca M1.6
Ângulação Interna de 16°



**Transfer
mold. Aberta**

200712A



**Transfer
mold. Fechada**

200712B



Cicatrizador



Ø3.5

300712B	H2mm
300712C	H3mm
300712D	H4mm
300712E	H5mm
300712F	H6mm

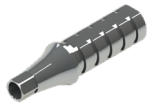


Cicatrizador

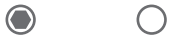


Ø4.5

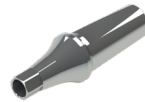
300713B	H2mm
300713C	H3mm
300713D	H4mm
300713E	H5mm
300713F	H6mm



**Pilar
Provisório**



400712C	400712S	H1mm
40712CB	40712SB	H2mm
40712CC	40712SC	H3mm
40712CD	40712SD	H4mm



**Pilar
Definitivo**

500712A	H1mm
500712B	H2mm
500712C	H3mm
500712D	H4mm
500712E	H5mm
500712F	H6mm

Pilar Definitivo - Âng. 15°



50712AG	H1mm
50712BG	H2mm
50712CG	H3mm

Pilar Definitivo - Âng. 25°

50712AH	H1mm
50712BH	H2mm
50712CH	H3mm



**Ucla Base
Metálica**



700712C	700712S	H1mm
70712CB	70712SB	H2mm
70712CC	70712SC	H3mm



**Mini Pilar
Cônico**

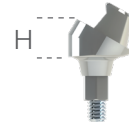


800712A	H1mm
800712B	H2mm
800712C	H3mm
800712D	H4mm
800712E	H5mm
800712F	H6mm



Mini Pilar - Âng. 17°

80712BG	H2mm
80712CG	H3mm
80712DG	H4mm



Mini Pilar - Âng. 30°

80712BH	H2mm
80712CH	H3mm
80712DH	H4mm



**Pilar
O'Ring**



900712A	H1mm
900712B	H2mm
900712C	H3mm
900712D	H4mm
900712E	H5mm
900712F	H6mm



**Parafuso
de Fixação**

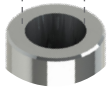
MI6HSI



Análogo
100703



Ø2.5mm



- Rosca M1.8
- Ângulação Interna de 11.5°



Transfer
mold. Aberta
200703A



Transfer
mold. Fechada
200703B



Cicatrizador
Tampa
301703



Cicatrizador



Ø3.3		Ø4.5	
300703A	H0.8mm	300704A	H0.8mm
300703B	H1.5mm	300704B	H1.5mm
300703C	H2.5mm	300704C	H2.5mm
300703D	H3.5mm	300704D	H3.5mm
300703E	H4.5mm	300704E	H4.5mm
300703F	H5.5mm	300704F	H5.5mm



Pilar
Provisório



40703CA	40703SA	H0.8mm
40703CB	40703SB	H1.5mm
40703CC	40703SC	H2.5mm



Ucla Base
Metálica



70703CA	70703SA	H0.8mm
70703CB	70703SB	H1.5mm
70703CC	70703SC	H2.5mm



Mini pilar
Cônico



800703A	H0.8mm	800703D	H3.5mm
800703B	H1.5mm	800703E	H4.5mm
800703C	H2.5mm	800703F	H5.5mm



Mini Pilar - Âng. 17°



Mini Pilar - Âng. 30°

80703BG	H1.5mm	80703BH	H1.5mm
80703CG	H2.5mm	80703CH	H2.5mm
80703DG	H3.5mm	80703DH	H3.5mm



Pilar
O'Ring



900703A	H0.8mm
900703B	H1.5mm
900703C	H2.5mm
900703D	H3.5mm
900703E	H4.5mm
900703F	H5.5mm



Pilar GT



801007A	H0.8mm	801007D	H3.5mm
801007B	H1.5mm	801007E	H4.5mm
801007C	H2.5mm	801007F	H5.5mm



Parafuso
de Fixação
M18HND



Pilar
Universal



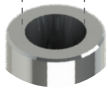
50708DA	Ø3.3 x 4mm - H0.8mm	50709DA	Ø4.5 x 4mm - H0.8mm	50708FA	Ø3.3 x 6mm - H0.8mm	50709FA	Ø4.5 x 6mm - H0.8mm
50708DB	Ø3.3 x 4mm - H1.5mm	50709DB	Ø4.5 x 4mm - H1.5mm	50708FB	Ø3.3 x 6mm - H1.5mm	50709FB	Ø4.5 x 6mm - H1.5mm
50708DC	Ø3.3 x 4mm - H2.5mm	50709DC	Ø4.5 x 4mm - H2.5mm	50708FC	Ø3.3 x 6mm - H2.5mm	50709FC	Ø4.5 x 6mm - H2.5mm
50708DD	Ø3.3 x 4mm - H3.5mm	50709DD	Ø4.5 x 4mm - H3.5mm	50708FD	Ø3.3 x 6mm - H3.5mm	50709FD	Ø4.5 x 6mm - H3.5mm
50708DE	Ø3.3 x 4mm - H4.5mm	50709DE	Ø4.5 x 4mm - H4.5mm	50708FE	Ø3.3 x 6mm - H4.5mm	50709FE	Ø4.5 x 6mm - H4.5mm
50708DF	Ø3.3 x 4mm - H5.5mm	50709DF	Ø4.5 x 4mm - H5.5mm	50708FF	Ø3.3 x 6mm - H5.5mm	50709FF	Ø4.5 x 6mm - H5.5mm



Análogo
100703



Ø2.5mm



- Rosca M1.8
- Ângulação Interna de 11.5°



Transfer
mold. Aberta
200703A



Transfer
mold. Fechada
200703B



Cicatrizador
Tampa
301703



Cicatrizador



Ø3.3		Ø4.5	
300703A	H0.8mm	300704A	H0.8mm
300703B	H1.5mm	300704B	H1.5mm
300703C	H2.5mm	300704C	H2.5mm
300703D	H3.5mm	300704D	H3.5mm
300703E	H4.5mm	300704E	H4.5mm
300703F	H5.5mm	300704F	H5.5mm



Pilar
Provisório



40703CA	40703SA	H0.8mm
40703CB	40703SB	H1.5mm
40703CC	40703SC	H2.5mm



Ucla Base
Metálica



70703CA	70703SA	H0.8mm
70703CB	70703SB	H1.5mm
70703CC	70703SC	H2.5mm



Mini pilar
Cônico



800703A	H0.8mm	800703D	H3.5mm
800703B	H1.5mm	800703E	H4.5mm
800703C	H2.5mm	800703F	H5.5mm



Mini Pilar - Âng. 17°



Mini Pilar - Âng. 30°

80703BG	H1.5mm	80703BH	H1.5mm
80703CG	H2.5mm	80703CH	H2.5mm
80703DG	H3.5mm	80703DH	H3.5mm



Pilar
O'Ring



900703A	H0.8mm
900703B	H1.5mm
900703C	H2.5mm
900703D	H3.5mm
900703E	H4.5mm
900703F	H5.5mm



Pilar GT



801007A	H0.8mm	801007D	H3.5mm
801007B	H1.5mm	801007E	H4.5mm
801007C	H2.5mm	801007F	H5.5mm



Parafuso
de Fixação
M18HND



Pilar
Universal



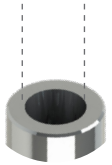
50708DA	Ø3.3 x 4mm - H0.8mm	50709DA	Ø4.5 x 4mm - H0.8mm	50708FA	Ø3.3 x 6mm - H0.8mm	50709FA	Ø4.5 x 6mm - H0.8mm
50708DB	Ø3.3 x 4mm - H1.5mm	50709DB	Ø4.5 x 4mm - H1.5mm	50708FB	Ø3.3 x 6mm - H1.5mm	50709FB	Ø4.5 x 6mm - H1.5mm
50708DC	Ø3.3 x 4mm - H2.5mm	50709DC	Ø4.5 x 4mm - H2.5mm	50708FC	Ø3.3 x 6mm - H2.5mm	50709FC	Ø4.5 x 6mm - H2.5mm
50708DD	Ø3.3 x 4mm - H3.5mm	50709DD	Ø4.5 x 4mm - H3.5mm	50708FD	Ø3.3 x 6mm - H3.5mm	50709FD	Ø4.5 x 6mm - H3.5mm
50708DE	Ø3.3 x 4mm - H4.5mm	50709DE	Ø4.5 x 4mm - H4.5mm	50708FE	Ø3.3 x 6mm - H4.5mm	50709FE	Ø4.5 x 6mm - H4.5mm
50708DF	Ø3.3 x 4mm - H5.5mm	50709DF	Ø4.5 x 4mm - H5.5mm	50708FF	Ø3.3 x 6mm - H5.5mm	50709FF	Ø4.5 x 6mm - H5.5mm



Análogo
100703



Ø2.5mm



- Rosca M1.8
- Ângulação Interna de 11.5°



Transfer
mold. Aberta
200703A



Transfer
mold. Fechada
200703B



Cicatrizador
Tampa
301703



Cicatrizador



Ø3.3		Ø4.5	
300703A	H0.8mm	300704A	H0.8mm
300703B	H1.5mm	300704B	H1.5mm
300703C	H2.5mm	300704C	H2.5mm
300703D	H3.5mm	300704D	H3.5mm
300703E	H4.5mm	300704E	H4.5mm
300703F	H5.5mm	300704F	H5.5mm



Pilar
Provisório



40703CA	40703SA	H0.8mm
40703CB	40703SB	H1.5mm
40703CC	40703SC	H2.5mm



Ucla Base
Metálica



70703CA	70703SA	H0.8mm
70703CB	70703SB	H1.5mm
70703CC	70703SC	H2.5mm



Mini pilar
Cônico



800703A	H0.8mm	800703D	H3.5mm
800703B	H1.5mm	800703E	H4.5mm
800703C	H2.5mm	800703F	H5.5mm

Componentes para Mini Pilar - Pág 36



Mini Pilar - Âng. 17°



Mini Pilar - Âng. 30°

80703BG	H1.5mm	80703BH	H1.5mm
80703CG	H2.5mm	80703CH	H2.5mm
80703DG	H3.5mm	80703DH	H3.5mm



Pilar
O'Ring



900703A	H0.8mm
900703B	H1.5mm
900703C	H2.5mm
900703D	H3.5mm
900703E	H4.5mm
900703F	H5.5mm



Pilar GT



801007A	H0.8mm	801007D	H3.5mm
801007B	H1.5mm	801007E	H4.5mm
801007C	H2.5mm	801007F	H5.5mm

Componentes para Pilar GT - Pág 35



Parafuso
de Fixação
M18HND



Pilar
Universal



50708DA	Ø3.3 x 4mm - H0.8mm	50709DA	Ø4.5 x 4mm - H0.8mm	50708FA	Ø3.3 x 6mm - H0.8mm	50709FA	Ø4.5 x 6mm - H0.8mm
50708DB	Ø3.3 x 4mm - H1.5mm	50709DB	Ø4.5 x 4mm - H1.5mm	50708FB	Ø3.3 x 6mm - H1.5mm	50709FB	Ø4.5 x 6mm - H1.5mm
50708DC	Ø3.3 x 4mm - H2.5mm	50709DC	Ø4.5 x 4mm - H2.5mm	50708FC	Ø3.3 x 6mm - H2.5mm	50709FC	Ø4.5 x 6mm - H2.5mm
50708DD	Ø3.3 x 4mm - H3.5mm	50709DD	Ø4.5 x 4mm - H3.5mm	50708FD	Ø3.3 x 6mm - H3.5mm	50709FD	Ø4.5 x 6mm - H3.5mm
50708DE	Ø3.3 x 4mm - H4.5mm	50709DE	Ø4.5 x 4mm - H4.5mm	50708FE	Ø3.3 x 6mm - H4.5mm	50709FE	Ø4.5 x 6mm - H4.5mm
50708DF	Ø3.3 x 4mm - H5.5mm	50709DF	Ø4.5 x 4mm - H5.5mm	50708FF	Ø3.3 x 6mm - H5.5mm	50709FF	Ø4.5 x 6mm - H5.5mm

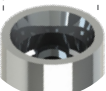
Componentes para Pilar Universal - Pág 35



Análogo 100750



Ø3,5mm



Rosca M1.6



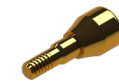
Transfer mold. Aberta

200750A



Transfer mold. Fechada

200750B



Cicatrizador

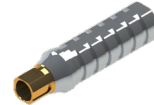


300750B H2mm

300750C H3.5mm

300750E H5mm

300750F H6mm



Pilar Provisório

400750C

400750S



Ucla Base Metálica

700750C

700750S



Mini Pilar Cônico



800750A H1mm

800750B H2mm

800750C H3mm

800750D H4mm

800750E H5mm

800750F H6mm



Mini Pilar - Âng. 17°

80750BG H2mm

80750CG H3mm

80750DG H4mm



Mini Pilar - Âng. 30°

80750CH H3mm

80750DH H4mm



Pilar O'Ring



900750B H2mm

900750C H3.5mm

900750E H5mm

900750F H6mm



Cicatrizador Tampa



301750



Parafuso de Fixação



M16TNC

Prótese cimentada

Análogo CI



10750DD Ø3.5 x 4mm

10750DF Ø3.5 x 5.5mm

10750ED Ø5 x 4mm

10750EF Ø5 x 5.5mm



Pilar Definitivo CI

5750DDA Ø3.5 x 4mm - H1mm

5750DDB Ø3.5 x 4mm - H2mm

5750DDC Ø3.5 x 4mm - H3mm

5750DFA Ø3.5 x 5.5mm - H1mm

5750DFB Ø3.5 x 5.5mm - H2mm

5750DFC Ø3.5 x 5.5mm - H3mm

5750EDA Ø5 x 4mm - H1mm

5750EDB Ø5 x 4mm - H2mm

5750EDC Ø5 x 4mm - H3mm

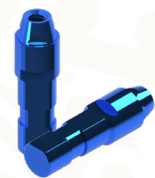
5750EFA Ø5 x 5.5mm - H1mm

5750EFB Ø5 x 5.5mm - H2mm

5750EFC Ø5 x 5.5mm - H3mm

Prótese Parafusada - SRA

Análogo AP (SRA)



100751 Ø3.5

100752 Ø4.6



Transfer mold. Aberta (SRA)



Transfer mold. Fechada (SRA)

200751A Ø3.5 - Mold. Aberta

200751B Ø3.5 - Mold. Fechada

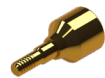
200752A Ø4.6 - Mold. Aberta

200752B Ø4.6 - Mold. Fechada



Cicatrizador Tampa

301751



Cicatrizador



300751B H2mm

300751C H3.5mm

300751E H5mm

300751F H6mm



Pilar Provisório AP (SRA)

400751C Ø3.5

400751S Ø3.5

400752C Ø4.6

400752S Ø4.6



Ucla Plástica AP (SRA)



600751C Ø3.5



600751S Ø3.5



600752C Ø4.6



600752S Ø4.6



Mini Pilar AP (SRA)

800751A Ø3.5 X H1mm

800751B Ø3.5 X H2.5mm

800751C Ø3.5 X H4mm

800752A Ø4.6 X H1mm

800752B Ø4.6 X H2.5mm

800752C Ø4.6 X H4mm



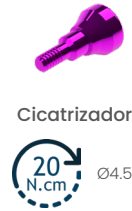
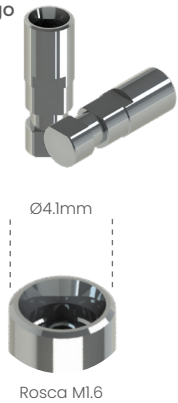
Parafuso de Fixação



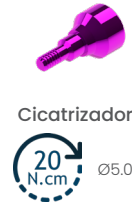
M14UMU



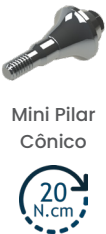
Análogo
100755



300755B	H2mm
300755C	H3mm
300755D	H4mm
300755E	H5mm
300755F	H6mm



300756B	H2mm
300756C	H3mm
300756D	H4mm
300756E	H5mm
300756F	H6mm



800755A	H1mm
800755B	H2mm
800755C	H3mm
800755D	H4mm
800755E	H5mm
800755F	H6mm



Mini Pilar - Âng. 17°

80755BG	H2mm
80755CG	H3mm
80755DG	H4mm

Mini Pilar - Âng. 30°

80755CH	H3mm
80755DH	H4mm

Pilar
O'Ring

900755B	H2mm
900755C	H3.5mm
900755E	H5mm
900755F	H6mm

Parafuso de Fixação



Prótese cimentada

Análogo
CI



10750ED	Ø5 x 4mm
10750EF	Ø5 x 5.5mm



5755EDA	Ø5 x 4mm - H1mm
5755EDB	Ø5 x 4mm - H2mm
5755EDC	Ø5 x 4mm - H3mm
5755EFA	Ø5 x 5.5mm - H1mm
5755EFB	Ø5 x 5.5mm - H2mm
5755EFC	Ø5 x 5.5mm - H3mm

Prótese Parafusada - SRA

Análogo
AP (SRA)



100752 Ø4.6



20 N.cm



200752A	Ø4.6 - Mold. Aberta
200752B	Ø4.6 - Mold. Fechada



● 400752C
○ 400752S

Ucla Plástica AP (SRA)



● 600752C
○ 600752S



Mini Pilar AP (SRA)

800756A	Ø4.6 X H1mm
800756B	Ø4.6 X H2.5mm
800756C	Ø4.6 X H4mm

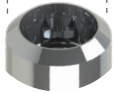


M14UMU

Análogo
100730



Ø4.8mm



Rosca M2.0



Transfer
mold. Aberta
200730A



Transfer
mold. Fechada
200730B

Cicatrizador Tampa



20
N.cm

301730



300730B H2mm

300730C H3mm

300730D H4.5mm

300730F H6mm

Cicatrizador

20
N.cm



Ucla
Base Metálica

700730C

700730S



Pilar
Provisório

400730C

400730S



Mini Pilar
Cônico

32
N.cm

800730A H1mm

800730B H2mm

800730C H3mm

800730D H4mm



Mini Pilar - Âng. 17°

80730BG H1.5mm

80730CG H2.5mm

80730DG H3.5mm

32
N.cm



Mini Pilar - Âng. 30°

80730CH H2.5mm

80730DH H3.5mm



Pilar
O'Ring

20
N.cm

900730B H2mm

900730C H3mm

900730D H4.5mm

900730F H6mm

Parafuso de Fixação



32
N.cm

M20TRN

Prótese cimentada

Análogo
CI
100730CI



80730CI

Mini Pilar
CI

Pilar SynOcta®
Cimentável

32
N.cm

Coping
Plástico CI



60730CCI

60730SCI



Análogo Pilar Sólido

100780A H4mm

100780B H5.5mm

100780C H7mm



Pilar Sólido

500780A H4mm

500780B H5.5mm

500780C H7mm

Prótese Parafusada - SO

Análogo
SO
100730AP



Mini Pilar SO
Pilar SynOcta®
80730AP

32
N.cm



Transfer
mold. Aberta
200731A



Transfer
mold. Fechada
200731B



Coping
Plástica SO

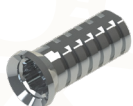
60730CAP

60730SAP



Cicatrizador
Tampa
301731

20
N.cm



Pilar
Provisório

400731C

400731S



Ucla Base
Metálica SO

700731C

700731S



Parafuso
de Fixação

M20TST

32
N.cm

Análogo
100736



Cicatrizador
Tampa



300736B	H2mm
300736C	H3mm
300736D	H4.5mm
300736F	H6mm



Ucla
Base Metálica

- 700736C
- 700736S



Pilar
Provisório

- 400736C
- 400736S



Pilar O'Ring

900736B	H2mm
900736C	H3mm
900736D	H4.5mm
900736F	H6mm



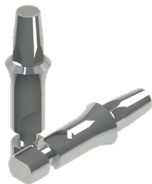
Parafuso
de Fixação

M20TRN



Prótese cimentada

Análogo
CI
100736CI



Mini Pilar CI

Pilar SynOcta®
Cimentável



Coping
Plástico CI

- 60736CCI
- 60736SCI

Análogo
do Pilar
Sólido



100781A	H4mm
100781B	H5.5mm



Pilar Sólido

500781A	H4mm
500781B	H5.5mm

Prótese Parafusada - SO

Análogo
SO
100736AP



Mini Pilar SO
Pilar SynOcta®



Transfer
mold. Aberta



Transfer
mold. Fechada



Coping
Plástica SO

- 60736CAP
- 60736SAP



Cicatrizador
Tampa



Pilar
Provisório SO

- 400737C
- 400737S



Ucla Base
Metálica SO

- 700737C
- 700737S



Parafuso
de Fixação

M20TST



Análogo
100790



Ø3.5 / 4.5mm



Rosca M1.6



Transfer
mold. Aberta
200790A



Transfer
mold. Fechada
200790B



Ucla
Base Metálica

- 700756C
- 700756S



Mini Pilar Cônico



800790A	H1.5mm
800790B	H2.5mm
800790C	H3.5mm
800790D	H4.5mm
800790E	H5.5mm
800790F	H6.5mm



Parafuso
de Fixação

● M16HCOC



Cicatrizador



30790BB	Ø3.8 x 2mm - H1.5mm	30791BB	Ø4.5 x 2mm - H1.5mm
30790BC	Ø3.8 x 2mm - H2.5mm	30791BC	Ø4.5 x 2mm - H2.5mm
30790BD	Ø3.8 x 2mm - H3.5mm	30791BD	Ø4.5 x 2mm - H3.5mm
30790DB	Ø3.8 x 4mm - H1.5mm	30791DB	Ø4.5 x 4mm - H1.5mm
30790DC	Ø3.8 x 4mm - H2.5mm	30791DC	Ø4.5 x 4mm - H2.5mm
30790DD	Ø3.8 x 4mm - H3.5mm	30791DD	Ø4.5 x 4mm - H3.5mm

Prótese Parafusada - SRA



Pilar
Definitivo

500790B H2.5mm



Mini pilar
Cônico



800791A	H1,5mm
800791B	H2.5mm
800791C	H3.5mm
800791D	H4.5mm

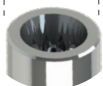


Análogo

100701



∅2.1mm



Rosca M1.6



Transfer
mold. Aberta

200701A



Transfer
mold. Fechada

200701B



Cicatrizador



300701B H2mm

300701C H3mm

300701D H4mm

300701E H5mm

300701F H6mm



Pilar
Provisório

● 400701C

○ 400701S



Pilar Definitivo

500701A H1mm

500701B H2mm

500701C H3mm

500701D H4mm



Ucla
Base Metálica

● 700701C

○ 700701S



Mini pilar
Cônico



800701A H1mm

800701B H2mm

800701C H3mm

800701D H4mm

800701E H5mm

800701F H6mm



Parafuso
de Fixação

○ M16HAT



Pilar definitivo - Âng. 15°

50701AG H1mm

50701BG H2mm

50701CG H3mm

Pilar definitivo - Âng. 25°

50701AH H1mm

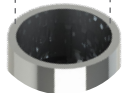
50701BH H2mm

50701CH H3mm

Análogo
100801



Ø3.15mm



Rosca M1.8



Transfer
mold. Aberta
200801A



Transfer
mold. Fechada
200801B



Cicatrizador



Cicatrizador



Ø3.9	
300801B	H2mm
300801C	H3mm
300801D	H4mm
300801E	H5mm
300801F	H6mm

Ø4.8	
300802B	H2mm
300802C	H3mm
300802D	H4mm
300802E	H5mm
300802F	H6mm



Ucla Base
Metálica



70801CA

70801SA

H1mm

70801CB

70801SB

H2mm

70801CC

70801SC

H3mm



Pilar
Provisório



400801C



400801S



Pilar
Definitivo

500801A

H1mm

500801B

H2mm

500801C

H3mm

500801D

H4mm



Mini Pilar
Cônico



800801A

H1mm

800801B

H2mm

800801C

H3mm

800801D

H4mm

800801E

H5mm

800801F

H6mm



Parafuso
de Fixação

○ M18HMI



Mini Pilar - Âng. 17°

80801BG

H2mm

80801CG

H3mm

80801DG

H4mm



Mini Pilar - Âng. 30°

80801CH

H3mm

80801DH

H4mm

Análogo
101005



Ø4.8mm



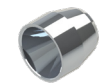
Rosca M1.4



Transfer
mold. Aberta
201005A



Transfer
mold. Fechada
201005B



Tampa
de Proteção

○ 301005



Pilar
Provisório

○ 401005



Pilar
P/ Solda

○ 401005E (Solda)

Ø3.18mm



Barra de Titânio
3.18mm

T03180136

Ø0.8mm



Fio de Titânio
0.80mm

T00800136



Coping
Plástico

○ 601005



Ucla Base
Metálica

○ 701005

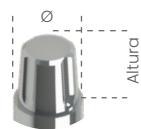


Parafuso
de Fixação

○ M14MU

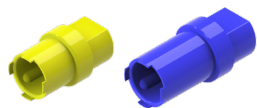


Análogo do Pilar Universal



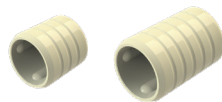
Ø x Alt.

100708D	Ø3.3 x 4mm
100708F	Ø3.3 x 6mm
100709D	Ø4.5 x 4mm
100709F	Ø4.5 x 6mm



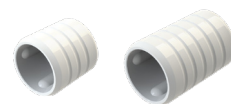
Poste Transfer do
Pilar Universal

200708D	Ø3.3 x 4mm
200708F	Ø3.3 x 6mm
200709D	Ø4.5 x 4mm
200709F	Ø4.5 x 6mm



Poste Provisório do
Pilar Universal

400708D	Ø3.3 x 4mm
400708F	Ø3.3 x 6mm
400709D	Ø4.5 x 4mm
400709F	Ø4.5 x 6mm



Coping Plástico do
Pilar Universal

600708D	Ø3.3 x 4mm
600708F	Ø3.3 x 6mm
600709D	Ø4.5 x 4mm
600709F	Ø4.5 x 6mm

Análogo
101007



Ø4.8mm



Rosca M2.0



Transfer
mold. Aberta
201007A



Transfer
mold. Fechada
201007B



Pilar
Provisório

- 401007C
- 401007S



Ucla Plástica

- 601007C
- 601007S



Ucla Base
Metálica

- 701007C
- 701007S



Cicatrizador
Tampa
301007



Pilar GT



801007A	H0.8mm
801007B	H1.5mm
801007C	H2.5mm
801007D	H3.5mm
801007E	H4.5mm
801007F	H5.5mm



Parafuso
de Fixação

- M20BT1



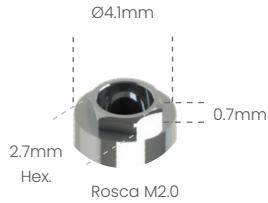
Sistema Conexão Externa

-
-
-
-
-

Possibilita a técnica de Plataforma Switching com o Sistema HE 5.0 3i®

Análogo

100105



Transfer mold. Aberta

200105A



Transfer mold. Fechada

200105B



Cicatrizador Tampa

301105



Cicatrizador

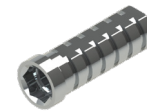


300105B	H2mm
300105C	H3mm
300105D	H4mm
300105E	H5mm
300105F	H6mm



Pilar Definitivo

500105A	H1mm
500105B	H2mm
500105C	H3mm
500105D	H4mm



Pilar Provisório

- 400105C
- 400105S



Ucla Plástica

- 600105C
- 600105S



Ucla Base Metálica

- 700105C
- 700105S



Mini pilar Cônico



800105A	H1mm
800105B	H2mm
800105C	H3mm
800105D	H4mm
800105E	H5mm
800105F	H6mm



Pilar Definitivo Ang. 15°

50105AG	H1mm
50105BG	H2mm
50105CG	H3mm



Pilar Definitivo Ang. 25°

50105AH	H1mm
50105BH	H2mm
50105CH	H3mm



Mini Pilar - Âng. 17°

80105BG	H2mm
80105CG	H3mm
80105DG	H4mm



Mini Pilar - Âng. 30°

80105CH	H3mm
80105DH	H4mm



Pilar O'ring



900105A	H1mm
900105B	H2mm
900105C	H3mm
900105D	H4mm
900105E	H5mm
900105F	H6mm



Mini pilar Esteticone



801004A	H1mm
801004B	H2mm
801004C	H3mm
801004D	H4mm
801004E	H5mm
801004F	H6mm

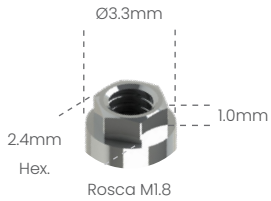


Parafuso de Fixação

- M20HX
- M20QU



Análogo
100102



Cicatrizador



300102B	H2mm
300102C	H3mm
300102D	H4mm
300102E	H5mm
300102F	H6mm



Pilar Provisório

400102C
400102S



Ucla Plástica

600102C
600102S



Ucla Base Metálica

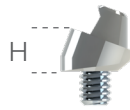
700102C
700102S



Mini pilar Cônico



800102A	H1mm
800102B	H2mm
800102C	H3mm
800102D	H4mm
800102E	H5mm
800102F	H6mm



Mini Pilar - Âng. 17°



80102BG	H2mm
80102CG	H3mm
80102DG	H4mm

Mini Pilar - Âng. 30°



80102CH	H3mm
80102DH	H4mm



Pilar O'ring



900102A	H1mm
900102B	H2mm
900102C	H3mm
900102D	H4mm
900102E	H5mm
900102F	H6mm

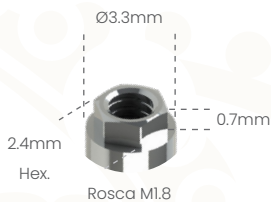


Parafuso de Fixação

M18HX
M18QU



Análogo
100102



Cicatrizador



300102B	H2mm
300102C	H3mm
300102D	H4mm
300102E	H5mm
300102F	H6mm



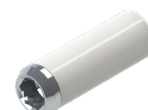
Pilar Provisório

400102C
400102S



Ucla Plástica

600102C
600102S



Ucla Base Metálica

700102C
700102S



Mini pilar Cônico



800102A	H1mm
800102B	H2mm
800102C	H3mm
800102D	H4mm
800102E	H5mm
800102F	H6mm



Mini Pilar - Âng. 17°



80102BG	H2mm
80102CG	H3mm
80102DG	H4mm

Mini Pilar - Âng. 30°



80102CH	H3mm
80102DH	H4mm



Pilar O'ring



900102A	H1mm
900102B	H2mm
900102C	H3mm
900102D	H4mm
900102E	H5mm
900102F	H6mm



Parafuso de Fixação

M18HX
M18QU



Possibilita a técnica de Plataforma Switching com o Sistema HE 5.0 3i®

Análogo

100105



Ø4.1mm



Transfer mold. Aberta

200105A



Transfer mold. Fechada

200105B



Cicatrizador Tampa

301105



Cicatrizador

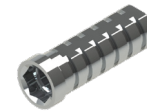


300105B	H2mm
300105C	H3mm
300105D	H4mm
300105E	H5mm
300105F	H6mm



Pilar Definitivo

500105A	H1mm
500105B	H2mm
500105C	H3mm
500105D	H4mm



Pilar Provisório

- 400105C
- 400105S



Ucla Plástica

- 600105C
- 600105S



Ucla Base Metálica

- 700105C
- 700105S



Mini pilar Cônico



800105A	H1mm
800105B	H2mm
800105C	H3mm
800105D	H4mm
800105E	H5mm
800105F	H6mm



Pilar Definitivo Ang. 15°

50105AG	H1mm
50105BG	H2mm
50105CG	H3mm



Pilar Definitivo Ang. 25°

50105AH	H1mm
50105BH	H2mm
50105CH	H3mm



Mini Pilar - Âng. 17°

80105BG	H2mm
80105CG	H3mm
80105DG	H4mm



Mini Pilar - Âng. 30°

80105CH	H3mm
80105DH	H4mm



Pilar O'ring



900105A	H1mm
900105B	H2mm
900105C	H3mm
900105D	H4mm
900105E	H5mm
900105F	H6mm



Mini pilar Esteticone



801004A	H1mm
801004B	H2mm
801004C	H3mm
801004D	H4mm
801004E	H5mm
801004F	H6mm



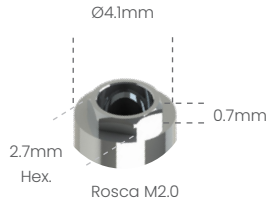
Parafuso de Fixação

- M20HX
- M20QU



Possibilita a técnica de Plataforma Switching com o Sistema HE 5.0 31*

Análogo
100105



Transfer mold.
Aberta
200105A



Transfer mold.
Fechada
200105B



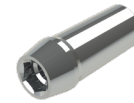
Cicatrizador
Tampa
301105



Cicatrizador

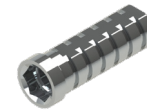


300105B	H2mm
300105C	H3mm
300105D	H4mm
300105E	H5mm
300105F	H6mm



Pilar
Definitivo

500105A	H1mm
500105B	H2mm
500105C	H3mm
500105D	H4mm



Pilar
Provisório

- 400105C
- 400105S



Ucla
Plástica

- 600105C
- 600105S



Ucla
Base Metálica

- 700105C
- 700105S



Mini pilar
Cônico



800105A	H1mm
800105B	H2mm
800105C	H3mm
800105D	H4mm
800105E	H5mm
800105F	H6mm



Pilar Definitivo Ang. 15°

50105AG	H1mm
50105BG	H2mm
50105CG	H3mm



Pilar Definitivo Ang. 25°

50105AH	H1mm
50105BH	H2mm
50105CH	H3mm



Mini Pilar - Âng. 17°

80105BG	H2mm
80105CG	H3mm
80105DG	H4mm



Mini Pilar - Âng. 30°

80105CH	H3mm
80105DH	H4mm



Pilar O'ring



900105A	H1mm
900105B	H2mm
900105C	H3mm
900105D	H4mm
900105E	H5mm
900105F	H6mm



Mini pilar
Esteticone



801004A	H1mm
801004B	H2mm
801004C	H3mm
801004D	H4mm
801004E	H5mm
801004F	H6mm

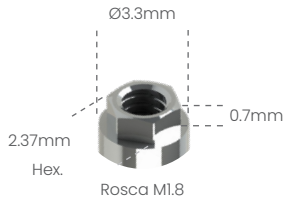


Parafuso
de Fixação

- M20HX
- M20QU



Análogo
100102



Transfer mold.
Aberta
200102A



Transfer mold.
Fechada
200102B



Cicatrizador

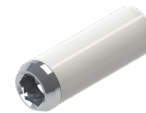


300102B	H2mm
300102C	H3mm
300102D	H4mm
300102E	H5mm
300102F	H6mm



Ucla
Plástica

- 600102C
- 600102S



Ucla
Base Metálica

- 700102C
- 700102S



Mini pilar
Cônico



800102A	H1mm
800102B	H2mm
800102C	H3mm
800102D	H4mm
800102E	H5mm
800102F	H6mm



Mini Pilar - Âng. 17°

80102BG	H2mm
80102CG	H3mm
80102DG	H4mm



Mini Pilar - Âng. 30°

80102CH	H3mm
80102DH	H4mm



Pilar
O'ring



900102A	H1mm
900102B	H2mm
900102C	H3mm
900102D	H4mm
900102E	H5mm
900102F	H6mm

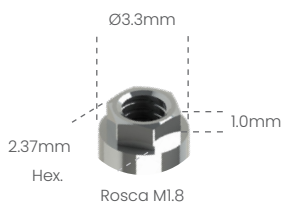


Parafuso
de Fixação

- M18HX
- M18QU



Análogo
100102



Transfer mold.
Aberta
200102A



Transfer mold.
Fechada
200102B



Cicatrizador

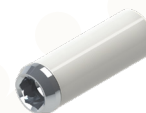


300102B	H2mm
300102C	H3mm
300102D	H4mm
300102E	H5mm
300102F	H6mm



Ucla
Plástica

- 600102C
- 600102S



Ucla
Base Metálica

- 700102C
- 700102S



Mini pilar
Cônico



800102A	H1mm
800102B	H2mm
800102C	H3mm
800102D	H4mm
800102E	H5mm
800102F	H6mm



Mini Pilar - Âng. 17°

80102BG	H2mm
80102CG	H3mm
80102DG	H4mm



Mini Pilar - Âng. 30°

80102CH	H3mm
80102DH	H4mm



Pilar
O'ring



900102A	H1mm
900102B	H2mm
900102C	H3mm
900102D	H4mm
900102E	H5mm
900102F	H6mm

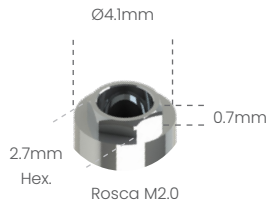


Parafuso
de Fixação

- M18HX
- M18QU



Análogo
100105



Transfer mold.
Aberta
200105A



Transfer mold.
Fechada
200105B



Cicatrizador
Tampa
301105



Cicatrizador

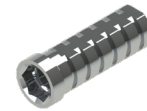


300105B	H2mm
300105C	H3mm
300105D	H4mm
300105E	H5mm
300105F	H6mm



Pilar
Definitivo

500105A	H1mm
500105B	H2mm
500105C	H3mm
500105D	H4mm



Pilar
Provisório

- 400105C
- 400105S



Ucla
Plástica

- 600105C
- 600105S



Ucla
Base Metálica

- 700105C
- 700105S



Mini pilar
Cônico



800105A	H1mm
800105B	H2mm
800105C	H3mm
800105D	H4mm
800105E	H5mm
800105F	H6mm



Pilar Definitivo Ang. 15°

50105AG	H1mm
50105BG	H2mm
50105CG	H3mm



Pilar Definitivo Ang. 25°

50105AH	H1mm
50105BH	H2mm
50105CH	H3mm



Mini Pilar - Âng. 17°

80105BG	H2mm
80105CG	H3mm
80105DG	H4mm



Mini Pilar - Âng. 30°

80105CH	H3mm
80105DH	H4mm



Pilar O'ring



900105A	H1mm
900105B	H2mm
900105C	H3mm
900105D	H4mm
900105E	H5mm
900105F	H6mm



Mini pilar
Esteticone



801004A	H1mm
801004B	H2mm
801004C	H3mm
801004D	H4mm
801004E	H5mm
801004F	H6mm



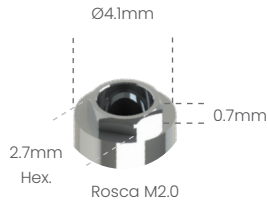
Parafuso
de Fixação

- M20HX
- M20QU



*Implante 3.25 apenas para Classic e Torq Int. Switch

Análogo
100105



Transfer mold. Aberta
200105A



Transfer mold. Fechada
200105B



Cicatrizador Tampa
301105



Cicatrizador

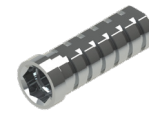


300105B	H2mm
300105C	H3mm
300105D	H4mm
300105E	H5mm
300105F	H6mm



Pilar Definitivo

500105A	H1mm
500105B	H2mm
500105C	H3mm
500105D	H4mm



Pilar Provisório

- 400105C
- 400105S



Ucla Plástica

- 600105C
- 600105S



Ucla Base Metálica

- 700105C
- 700105S



Mini pilar Cônico



800105A	H1mm
800105B	H2mm
800105C	H3mm
800105D	H4mm
800105E	H5mm
800105F	H6mm



Pilar Definitivo Ang. 15°

50105AG	H1mm
50105BG	H2mm
50105CG	H3mm



Pilar Definitivo Ang. 25°

50105AH	H1mm
50105BH	H2mm
50105CH	H3mm



Mini Pilar - Âng. 17°

80105BG	H2mm
80105CG	H3mm
80105DG	H4mm



Mini Pilar - Âng. 30°

80105CH	H3mm
80105DH	H4mm



Pilar O'ring



900105A	H1mm
900105B	H2mm
900105C	H3mm
900105D	H4mm
900105E	H5mm
900105F	H6mm



Mini pilar Esteticone

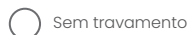
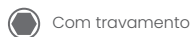


801004A	H1mm
801004B	H2mm
801004C	H3mm
801004D	H4mm
801004E	H5mm
801004F	H6mm

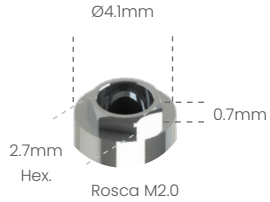


Parafuso de Fixação

- M20HX
- M20QU



Análogo
100105



Transfer mold.
Aberta
200105A



Transfer mold.
Fechada
200105B



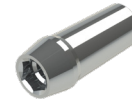
Cicatrizador
Tampa
301105



Cicatrizador

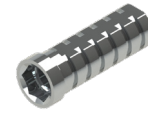


300105B	H2mm
300105C	H3mm
300105D	H4mm
300105E	H5mm
300105F	H6mm



Pilar
Definitivo

500105A	H1mm
500105B	H2mm
500105C	H3mm
500105D	H4mm



Pilar
Provisório

- 400105C
- 400105S



Ucla
Plástica

- 600105C
- 600105S



Ucla
Base Metálica

- 700105C
- 700105S



Mini pilar
Cônico



800105A	H1mm
800105B	H2mm
800105C	H3mm
800105D	H4mm
800105E	H5mm
800105F	H6mm



Pilar Definitivo Ang. 15°

50105AG	H1mm
50105BG	H2mm
50105CG	H3mm



Pilar Definitivo Ang. 25°

50105AH	H1mm
50105BH	H2mm
50105CH	H3mm



Mini Pilar - Âng. 17°

80105BG	H2mm
80105CG	H3mm
80105DG	H4mm



Mini Pilar - Âng. 30°

80105CH	H3mm
80105DH	H4mm



Pilar O'ring



900105A	H1mm
900105B	H2mm
900105C	H3mm
900105D	H4mm
900105E	H5mm
900105F	H6mm



Mini pilar
Esteticone



801004A	H1mm
801004B	H2mm
801004C	H3mm
801004D	H4mm
801004E	H5mm
801004F	H6mm



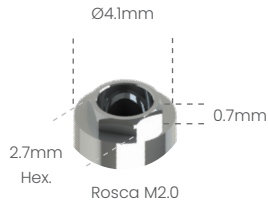
Parafuso
de Fixação

- M20HX
- M20QU



Possibilita a técnica de Plataforma Switching com o Sistema HE 5.0 3i®

Análogo
100105



Transfer mold. Aberta
200105A



Transfer mold. Fechada
200105B



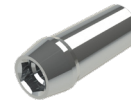
Cicatrizador



300105B	H2mm
300105C	H3mm
300105D	H4mm
300105E	H5mm
300105F	H6mm

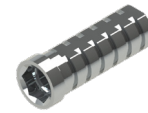


Cicatrizador Tampa
301105



Pilar Definitivo

500105A	H1mm
500105B	H2mm
500105C	H3mm
500105D	H4mm



Pilar Provisório

- 400105C
- 400105S



Ucla Plástica

- 600105C
- 600105S



Ucla Base Metálica

- 700105C
- 700105S



Mini pilar Cônico



800105A	H1mm
800105B	H2mm
800105C	H3mm
800105D	H4mm
800105E	H5mm
800105F	H6mm



Pilar Definitivo Ang. 15°

50105AG	H1mm
50105BG	H2mm
50105CG	H3mm



Pilar Definitivo Ang. 25°

50105AH	H1mm
50105BH	H2mm
50105CH	H3mm



Mini Pilar - Âng. 17°

80105BG	H2mm
80105CG	H3mm
80105DG	H4mm



Mini Pilar - Âng. 30°

80105CH	H3mm
80105DH	H4mm



Pilar O'ring



900105A	H1mm
900105B	H2mm
900105C	H3mm
900105D	H4mm
900105E	H5mm
900105F	H6mm



Mini pilar Esteticone



801004A	H1mm
801004B	H2mm
801004C	H3mm
801004D	H4mm
801004E	H5mm
801004F	H6mm

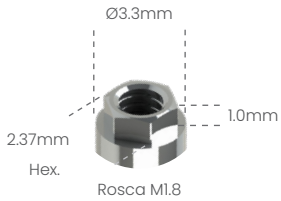


Parafuso de Fixação

- M20HX
- M20QU



Análogo
100102



Transfer mold.
Aberta
200102A



Transfer mold.
Fechada
200102B



Cicatrizador



300102B	H2mm
300102C	H3mm
300102D	H4mm
300102E	H5mm
300102F	H6mm



Ucla
Plástica

- 600102C
- 600102S



Ucla
Base Metálica

- 700102C
- 700102S



Mini pilar
Cônico



800102A	H1mm
800102B	H2mm
800102C	H3mm
800102D	H4mm
800102E	H5mm
800102F	H6mm



Mini Pilar - Âng. 17°



80102BG	H2mm
80102CG	H3mm
80102DG	H4mm



Mini Pilar - Âng. 30°

80102CH	H3mm
80102DH	H4mm



Pilar
O'ring



900102A	H1mm
900102B	H2mm
900102C	H3mm
900102D	H4mm
900102E	H5mm
900102F	H6mm

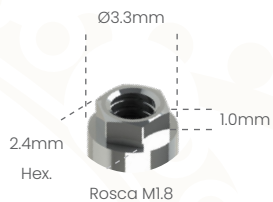


Parafuso
de Fixação

- M18HX
- M18QU



Análogo
100102



Transfer mold.
Aberta
200103A



Transfer mold.
Fechada
200103B



Cicatrizador



300102B	H2mm
300102C	H3mm
300102D	H4mm
300102E	H5mm
300102F	H6mm



Ucla
Plástica

- 600103C
- 600103S



Ucla
Base Metálica

- 700103C
- 700103S



Pilar
Definitivo

500103A	H1mm
500103B	H2mm
500103C	H3mm
500103D	H4mm



Mini pilar
Cônico



800102A	H1mm
800102B	H2mm
800102C	H3mm
800102D	H4mm
800102E	H5mm
800102F	H6mm



Parafuso
de Fixação

- M18HX
- M18QU



Possibilita a técnica de Plataforma Switching com o Sistema HE 5.0 3i®

Análogo

100105



Ø4.1mm

2.7mm
Hex.

Rosca M2.0



**Transfer mold.
Aberta**

200105A



**Transfer mold.
Fechada**

200105B



**Cicatrizador
Tampa**

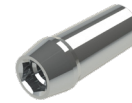
301105



Cicatrizador

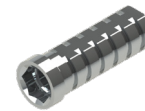


300105B	H2mm
300105C	H3mm
300105D	H4mm
300105E	H5mm
300105F	H6mm



**Pilar
Definitivo**

500105A	H1mm
500105B	H2mm
500105C	H3mm
500105D	H4mm



**Pilar
Provisório**

- 400105C
- 400105S

**Ucla
Plástica**



- 600105C
- 600105S

**Ucla
Base Metálica**



- 700105C
- 700105S



**Mini pilar
Cônico**



800105A	H1mm
800105B	H2mm
800105C	H3mm
800105D	H4mm
800105E	H5mm
800105F	H6mm

Pilar Definitivo Ang. 15°



50105AG	H1mm
50105BG	H2mm
50105CG	H3mm

Pilar Definitivo Ang. 25°



50105AH	H1mm
50105BH	H2mm
50105CH	H3mm

Mini Pilar – Âng. 17°



80105BG	H2mm
80105CG	H3mm
80105DG	H4mm



Mini Pilar – Âng. 30°

80105CH	H3mm
80105DH	H4mm



Pilar O'ring



900105A	H1mm
900105B	H2mm
900105C	H3mm
900105D	H4mm
900105E	H5mm
900105F	H6mm



**Mini pilar
Esteticone**



801004A	H1mm
801004B	H2mm
801004C	H3mm
801004D	H4mm
801004E	H5mm
801004F	H6mm



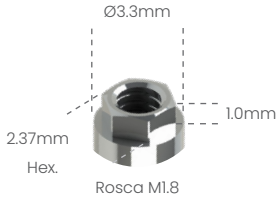
**Parafuso
de Fixação**

- M20HX
- M20QU



Análogo

100102



**Transfer mold.
Aberta**

200102A



**Transfer mold.
Fechada**

200102B



Cicatrizador



300102B	H2mm
300102C	H3mm
300102D	H4mm
300102E	H5mm
300102F	H6mm



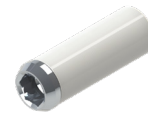
**Pilar
Provisório**

- 400102C
- 400102S



**Ucla
Plástica**

- 600102C
- 600102S



**Ucla
Base Metálica**

- 700102C
- 700102S



**Mini pilar
Cônico**



800102A	H1mm
800102B	H2mm
800102C	H3mm
800102D	H4mm
800102E	H5mm
800102F	H6mm



Mini Pilar – Âng. 17°

80102BG	H2mm
80102CG	H3mm
80102DG	H4mm



Mini Pilar – Âng. 30°

80102CH	H3mm
80102DH	H4mm



**Pilar
O'ring**



900102A	H1mm
900102B	H2mm
900102C	H3mm
900102D	H4mm
900102E	H5mm
900102F	H6mm



**Parafuso
de Fixação**

- M18HX
- M18QU



Possibilita a técnica de Plataforma Switching com o Sistema HE 5.0 3i*

Análogo

100105



Ø4.1mm

2.7mm
Hex.

Rosca M2.0



**Transfer mold.
Aberta**

200105A



**Transfer mold.
Fechada**

200105B



**Cicatrizador
Tampa**

301105



Cicatrizador

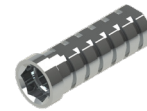


300105B	H2mm
300105C	H3mm
300105D	H4mm
300105E	H5mm
300105F	H6mm



**Pilar
Definitivo**

500105A	H1mm
500105B	H2mm
500105C	H3mm
500105D	H4mm



**Pilar
Provisório**

- 400105C
- 400105S

**Ucla
Plástica**

- 600105C
- 600105S

**Ucla
Base Metálica**

- 700105C
- 700105S



**Mini pilar
Cônico**



800105A	H1mm
800105B	H2mm
800105C	H3mm
800105D	H4mm
800105E	H5mm
800105F	H6mm

Pilar Definitivo Ang. 15°



50105AG	H1mm
50105BG	H2mm
50105CG	H3mm

Pilar Definitivo Ang. 25°



50105AH	H1mm
50105BH	H2mm
50105CH	H3mm

Mini Pilar - Âng. 17°



80105BG	H2mm
80105CG	H3mm
80105DG	H4mm



Mini Pilar - Âng. 30°

80105CH	H3mm
80105DH	H4mm



Pilar O'ring



900105A	H1mm
900105B	H2mm
900105C	H3mm
900105D	H4mm
900105E	H5mm
900105F	H6mm



**Mini pilar
Esteticone**



801004A	H1mm
801004B	H2mm
801004C	H3mm
801004D	H4mm
801004E	H5mm
801004F	H6mm



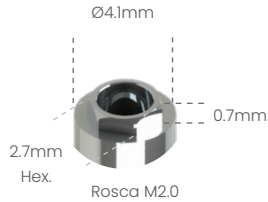
**Parafuso
de Fixação**

- M20HX
- M20QU



Possibilita a técnica de Plataforma Switching com o Sistema HE 5.0 3i*

Análogo
100105



Transfer mold. Aberta
200105A



Transfer mold. Fechada
200105B



Cicatrizador Tampa
301105



Cicatrizador



300105B	H2mm
300105C	H3mm
300105D	H4mm
300105E	H5mm
300105F	H6mm



Pilar Definitivo

500105A	H1mm
500105B	H2mm
500105C	H3mm
500105D	H4mm



Pilar Provisório

- 400105C
- 400105S



Ucla Plástica

- 600105C
- 600105S



Ucla Base Metálica

- 700105C
- 700105S



Mini pilar Cônico



800105A	H1mm
800105B	H2mm
800105C	H3mm
800105D	H4mm
800105E	H5mm
800105F	H6mm



Pilar Definitivo Ang. 15°

50105AG	H1mm
50105BG	H2mm
50105CG	H3mm



Pilar Definitivo Ang. 25°

50105AH	H1mm
50105BH	H2mm
50105CH	H3mm



Mini Pilar - Âng. 17°

80105BG	H2mm
80105CG	H3mm
80105DG	H4mm



Mini Pilar - Âng. 30°

80105CH	H3mm
80105DH	H4mm



Pilar O'ring



900105A	H1mm
900105B	H2mm
900105C	H3mm
900105D	H4mm
900105E	H5mm
900105F	H6mm



Mini pilar Esteticone



801004A	H1mm
801004B	H2mm
801004C	H3mm
801004D	H4mm
801004E	H5mm
801004F	H6mm



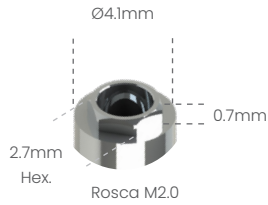
Parafuso de Fixação

- M20HX
- M20QU



Possibilita a técnica de Plataforma Switching com o Sistema HE 5.0 3j®

Análogo
100105



Transfer mold.
Aberta
200105A



Transfer mold.
Fechada
200105B



Cicatrizador
Tampa
301105



Cicatrizador



300105B	H2mm
300105C	H3mm
300105D	H4mm
300105E	H5mm
300105F	H6mm



Pilar
Definitivo

500105A	H1mm
500105B	H2mm
500105C	H3mm
500105D	H4mm



Pilar
Provisório

- 400105C
- 400105S



Ucla
Plástica

- 600105C
- 600105S



Ucla
Base Metálica

- 700105C
- 700105S



Mini pilar
Cônico



800105A	H1mm
800105B	H2mm
800105C	H3mm
800105D	H4mm
800105E	H5mm
800105F	H6mm



Pilar Definitivo Ang. 15°

50105AG	H1mm
50105BG	H2mm
50105CG	H3mm



Pilar Definitivo Ang. 25°

50105AH	H1mm
50105BH	H2mm
50105CH	H3mm



Mini Pilar - Âng. 17°

80105BG	H2mm
80105CG	H3mm
80105DG	H4mm



Mini Pilar - Âng. 30°

80105CH	H3mm
80105DH	H4mm



Pilar O'ring



900105A	H1mm
900105B	H2mm
900105C	H3mm
900105D	H4mm
900105E	H5mm
900105F	H6mm



Mini pilar
Esteticone



801004A	H1mm
801004B	H2mm
801004C	H3mm
801004D	H4mm
801004E	H5mm
801004F	H6mm



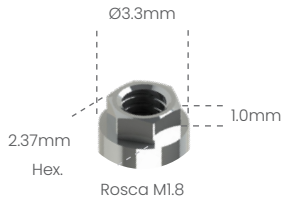
Parafuso
de Fixação

- M20HX
- M20QU



Análogo

100102



**Transfer mold.
Aberta**

200102A



**Transfer mold.
Fechada**

200102B



Cicatrizador



300102B	H2mm
300102C	H3mm
300102D	H4mm
300102E	H5mm
300102F	H6mm



**Pilar
Provisório**

- 400102C
- 400102S



**Ucla
Plástica**

- 600102C
- 600102S



**Ucla
Base Metálica**

- 700102C
- 700102S



**Mini pilar
Cônico**



800102A	H1mm
800102B	H2mm
800102C	H3mm
800102D	H4mm
800102E	H5mm
800102F	H6mm



Mini Pilar - Âng. 17°



80102BG	H2mm
80102CG	H3mm
80102DG	H4mm



Mini Pilar - Âng. 30°

80102CH	H3mm
80102DH	H4mm



**Pilar
O'ring**



900102A	H1mm
900102B	H2mm
900102C	H3mm
900102D	H4mm
900102E	H5mm
900102F	H6mm



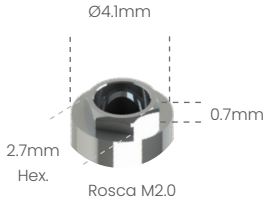
**Parafuso
de Fixação**

- M18HX
- M18QU



Possibilita a técnica de Plataforma Switching com o Sistema HE 5.0 3j®

Análogo
100105



Transfer mold. Aberta
200105A



Transfer mold. Fechada
200105B



Cicatrizador Tampa
301105



Cicatrizador

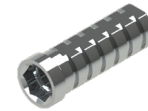


300105B	H2mm
300105C	H3mm
300105D	H4mm
300105E	H5mm
300105F	H6mm



Pilar Definitivo

500105A	H1mm
500105B	H2mm
500105C	H3mm
500105D	H4mm



Pilar Provisório

- 400105C
- 400105S



Ucla Plástica

- 600105C
- 600105S



Ucla Base Metálica

- 700105C
- 700105S



Mini pilar Cônico



800105A	H1mm
800105B	H2mm
800105C	H3mm
800105D	H4mm
800105E	H5mm
800105F	H6mm



Pilar Definitivo Ang. 15°

50105AG	H1mm
50105BG	H2mm
50105CG	H3mm



Pilar Definitivo Ang. 25°

50105AH	H1mm
50105BH	H2mm
50105CH	H3mm



Mini Pilar - Âng. 17°

80105BG	H2mm
80105CG	H3mm
80105DG	H4mm



Mini Pilar - Âng. 30°

80105CH	H3mm
80105DH	H4mm



Pilar O'ring



900105A	H1mm
900105B	H2mm
900105C	H3mm
900105D	H4mm
900105E	H5mm
900105F	H6mm



Mini pilar Esteticone



801004A	H1mm
801004B	H2mm
801004C	H3mm
801004D	H4mm
801004E	H5mm
801004F	H6mm



Parafuso de Fixação

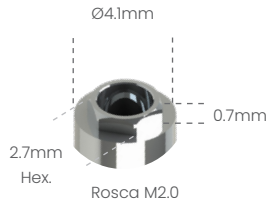
- M20HX
- M20QU



Possibilita a técnica de Plataforma Switching com o Sistema HE 5.0 3i®

Análogo

100105



Transfer mold. Aberta

200105A



Transfer mold. Fechada

200105B



Cicatrizador Tampa

301105



Cicatrizador

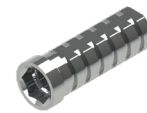


300105B	H2mm
300105C	H3mm
300105D	H4mm
300105E	H5mm
300105F	H6mm



Pilar Definitivo

500105A	H1mm
500105B	H2mm
500105C	H3mm
500105D	H4mm



Pilar Provisório

- 400105C
- 400105S



Ucla Plástica

- 600105C
- 600105S



Ucla Base Metálica

- 700105C
- 700105S



Mini pilar Cônico



800105A	H1mm
800105B	H2mm
800105C	H3mm
800105D	H4mm
800105E	H5mm
800105F	H6mm



Pilar Definitivo Ang. 15°

50105AG	H1mm
50105BG	H2mm
50105CG	H3mm



Pilar Definitivo Ang. 25°

50105AH	H1mm
50105BH	H2mm
50105CH	H3mm



Mini Pilar - Âng. 17°

80105BG	H2mm
80105CG	H3mm
80105DG	H4mm



Mini Pilar - Âng. 30°

80105CH	H3mm
80105DH	H4mm



Pilar O'ring



900105A	H1mm
900105B	H2mm
900105C	H3mm
900105D	H4mm
900105E	H5mm
900105F	H6mm



Mini pilar Esteticone



801004A	H1mm
801004B	H2mm
801004C	H3mm
801004D	H4mm
801004E	H5mm
801004F	H6mm



Parafuso de Fixação

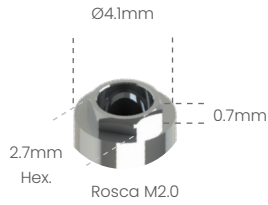
- M20HX
- M20QU



Possibilita a técnica de Plataforma Switching com o Sistema HE 5.0 3i*

Análogo

100105



Transfer mold. Aberta

200105A



Transfer mold. Fechada

200105B



Cicatrizador Tampa

301105



Cicatrizador

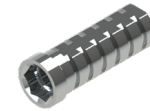


300105B	H2mm
300105C	H3mm
300105D	H4mm
300105E	H5mm
300105F	H6mm



Pilar Definitivo

500105A	H1mm
500105B	H2mm
500105C	H3mm
500105D	H4mm



Pilar Provisório

- 400105C
- 400105S

Ucla Plástica



- 600105C
- 600105S

Ucla Base Metálica



- 700105C
- 700105S



Mini pilar Cônico



800105A	H1mm
800105B	H2mm
800105C	H3mm
800105D	H4mm
800105E	H5mm
800105F	H6mm

Pilar Definitivo Ang. 15°



50105AG	H1mm
50105BG	H2mm
50105CG	H3mm

Pilar Definitivo Ang. 25°



50105AH	H1mm
50105BH	H2mm
50105CH	H3mm

Mini Pilar - Âng. 17°



80105BG	H2mm
80105CG	H3mm
80105DG	H4mm



Mini Pilar - Âng. 30°

80105CH	H3mm
80105DH	H4mm



Pilar O'ring



900105A	H1mm
900105B	H2mm
900105C	H3mm
900105D	H4mm
900105E	H5mm
900105F	H6mm



Mini pilar Esteticone



801004A	H1mm
801004B	H2mm
801004C	H3mm
801004D	H4mm
801004E	H5mm
801004F	H6mm



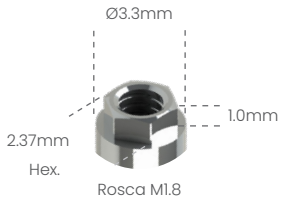
Parafuso de Fixação

- M20HX
- M20QU



Análogo

100102



Transfer mold.
Aberta

200102A



Transfer mold.
Fechada

200102B



Cicatrizador



300102B	H2mm
300102C	H3mm
300102D	H4mm
300102E	H5mm
300102F	H6mm



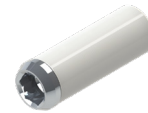
Pilar
Provisório

- 400102C
- 400102S



Ucla
Plástica

- 600102C
- 600102S



Ucla
Base Metálica

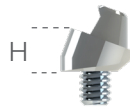
- 700102C
- 700102S



Mini pilar
Cônico



800102A	H1mm
800102B	H2mm
800102C	H3mm
800102D	H4mm
800102E	H5mm
800102F	H6mm



Mini Pilar - Âng. 17°



80102BG	H2mm
80102CG	H3mm
80102DG	H4mm



Mini Pilar - Âng. 30°

80102CH	H3mm
80102DH	H4mm



Pilar
O'ring



900102A	H1mm
900102B	H2mm
900102C	H3mm
900102D	H4mm
900102E	H5mm
900102F	H6mm



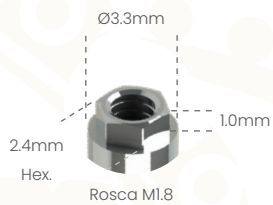
Parafuso
de Fixação

- M18HX
- M18QU



Análogo

100102



Transfer mold.
Aberta

200103A



Transfer mold.
Fechada

200103B



Cicatrizador



300102B	H2mm
300102C	H3mm
300102D	H4mm
300102E	H5mm
300102F	H6mm



Pilar
Provisório

- 400103C
- 400103S



Ucla
Plástica

- 600103C
- 600103S



Ucla
Base Metálica

- 700103C
- 700103S



Pilar
Definitivo

500103A	H1mm
500103B	H2mm
500103C	H3mm
500103D	H4mm



Mini pilar
Cônico



800102A	H1mm
800102B	H2mm
800102C	H3mm
800102D	H4mm
800102E	H5mm
800102F	H6mm



Parafuso
de Fixação

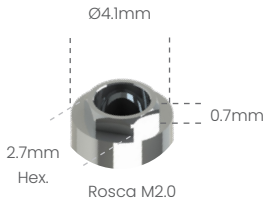
- M18HX
- M18QU



Possibilita a técnica de Plataforma Switching com o Sistema HE 5.0 3i®

Análogo

100105



Transfer mold. Aberta

200105A



Transfer mold. Fechada

200105B



Cicatrizador Tampa

301105



Cicatrizador

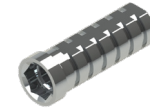


300105B	H2mm
300105C	H3mm
300105D	H4mm
300105E	H5mm
300105F	H6mm



Pilar Definitivo

500105A	H1mm
500105B	H2mm
500105C	H3mm
500105D	H4mm



Pilar Provisório

- 400105C
- 400105S



Ucla Plástica

- 600105C
- 600105S



Ucla Base Metálica

- 700105C
- 700105S



Mini pilar Cônico



800105A	H1mm
800105B	H2mm
800105C	H3mm
800105D	H4mm
800105E	H5mm
800105F	H6mm



Pilar Definitivo Ang. 15°

50105AG	H1mm
50105BG	H2mm
50105CG	H3mm



Pilar Definitivo Ang. 25°

50105AH	H1mm
50105BH	H2mm
50105CH	H3mm



Mini Pilar - Âng. 17°

80105BG	H2mm
80105CG	H3mm
80105DG	H4mm



Mini Pilar - Âng. 30°

80105CH	H3mm
80105DH	H4mm



Pilar O'ring



900105A	H1mm
900105B	H2mm
900105C	H3mm
900105D	H4mm
900105E	H5mm
900105F	H6mm



Mini pilar Esteticone



801004A	H1mm
801004B	H2mm
801004C	H3mm
801004D	H4mm
801004E	H5mm
801004F	H6mm



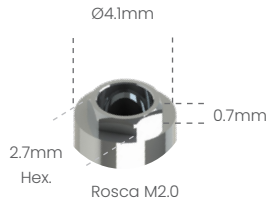
Parafuso de Fixação

- M20HX
- M20QU



Possibilita a técnica de Plataforma Switching com o Sistema HE 5.0 3i®

Análogo
100105



Transfer mold. Aberta
200105A



Transfer mold. Fechada
200105B



Cicatrizador Tampa
301105



Cicatrizador

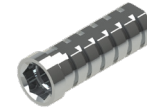


300105B	H2mm
300105C	H3mm
300105D	H4mm
300105E	H5mm
300105F	H6mm



Pilar Definitivo

500105A	H1mm
500105B	H2mm
500105C	H3mm
500105D	H4mm



Pilar Provisório

- 400105C
- 400105S



Ucla Plástica

- 600105C
- 600105S



Ucla Base Metálica

- 700105C
- 700105S



Mini pilar Cônico



800105A	H1mm
800105B	H2mm
800105C	H3mm
800105D	H4mm
800105E	H5mm
800105F	H6mm



Pilar Definitivo Ang. 15°

50105AG	H1mm
50105BG	H2mm
50105CG	H3mm



Pilar Definitivo Ang. 25°

50105AH	H1mm
50105BH	H2mm
50105CH	H3mm



Mini Pilar - Âng. 17°

80105BG	H2mm
80105CG	H3mm
80105DG	H4mm



Mini Pilar - Âng. 30°

80105CH	H3mm
80105DH	H4mm



Pilar O'ring



900105A	H1mm
900105B	H2mm
900105C	H3mm
900105D	H4mm
900105E	H5mm
900105F	H6mm



Mini pilar Esteticone



801004A	H1mm
801004B	H2mm
801004C	H3mm
801004D	H4mm
801004E	H5mm
801004F	H6mm



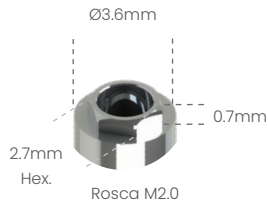
Parafuso de Fixação

- M20HX
- M20QU



Análogo

100108



Transfer mold.
Aberta

200108A



Transfer mold.
Fechada

200108B



Cicatrizador



300108B	H2mm
300108C	H3mm
300108D	H4mm
300108E	H5mm
300108F	H6mm



Pilar
Definitivo

500108A	H1mm
500108B	H2mm
500108C	H3mm
500108D	H4mm



Pilar
Provisório

- 400108C
- 400108S



Ucla
Plástica

- 600108C
- 600108S



Ucla
Base Metálica

- 700108C
- 700108S



Mini pilar
Cônico



800108A	H1mm
800108B	H2mm
800108C	H3mm
800108D	H4mm
800108E	H5mm
800108F	H6mm



Pilar Definitivo Ang. 15°

50108AG	H1mm
50108BG	H2mm
50108CG	H3mm



Pilar Definitivo Ang. 25°

50108AH	H1mm
50108BH	H2mm
50108CH	H3mm



Mini Pilar - Âng. 17°

80108BG	H2mm
80108CG	H3mm
80108DG	H4mm



Mini Pilar - Âng. 30°

80108CH	H3mm
80108DH	H4mm



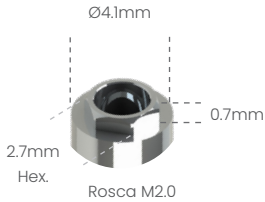
Parafuso
de Fixação

- M20HX
- M20QU



Possibilita a técnica de Plataforma Switching com o Sistema HE 5.0 3i®

Análogo
100105



Transfer mold. Aberta
200105A



Transfer mold. Fechada
200105B



Cicatrizador Tampa
301105



Cicatrizador

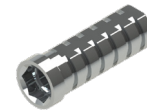


300105B	H2mm
300105C	H3mm
300105D	H4mm
300105E	H5mm
300105F	H6mm



Pilar Definitivo

500105A	H1mm
500105B	H2mm
500105C	H3mm
500105D	H4mm



Pilar Provisório

- 400105C
- 400105S



Ucla Plástica

- 600105C
- 600105S



Ucla Base Metálica

- 700105C
- 700105S



Mini pilar Cônico



800105A	H1mm
800105B	H2mm
800105C	H3mm
800105D	H4mm
800105E	H5mm
800105F	H6mm



Pilar Definitivo Ang. 15°

50105AG	H1mm
50105BG	H2mm
50105CG	H3mm



Pilar Definitivo Ang. 25°

50105AH	H1mm
50105BH	H2mm
50105CH	H3mm



Mini Pilar - Âng. 17°

80105BG	H2mm
80105CG	H3mm
80105DG	H4mm



Mini Pilar - Âng. 30°

80105CH	H3mm
80105DH	H4mm



Pilar O'ring



900105A	H1mm
900105B	H2mm
900105C	H3mm
900105D	H4mm
900105E	H5mm
900105F	H6mm



Mini pilar Esteticone



801004A	H1mm
801004B	H2mm
801004C	H3mm
801004D	H4mm
801004E	H5mm
801004F	H6mm

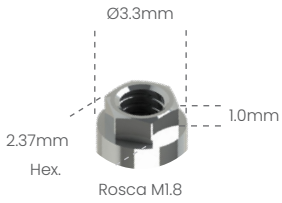


Parafuso de Fixação

- M20HX
- M20QU



Análogo
100102



Transfer mold.
Aberta
200102A



Transfer mold.
Fechada
200102B



Cicatrizador



300102B	H2mm
300102C	H3mm
300102D	H4mm
300102E	H5mm
300102F	H6mm



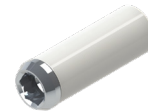
Pilar
Provisório

- 400102C
- 400102S



Ucla
Plástica

- 600102C
- 600102S



Ucla
Base Metálica

- 700102C
- 700102S



Mini pilar
Cônico



800102A	H1mm
800102B	H2mm
800102C	H3mm
800102D	H4mm
800102E	H5mm
800102F	H6mm



Mini Pilar - Âng. 17°

80102BG	H2mm
80102CG	H3mm
80102DG	H4mm



Mini Pilar - Âng. 30°

80102CH	H3mm
80102DH	H4mm



Pilar
O'ring



900102A	H1mm
900102B	H2mm
900102C	H3mm
900102D	H4mm
900102E	H5mm
900102F	H6mm

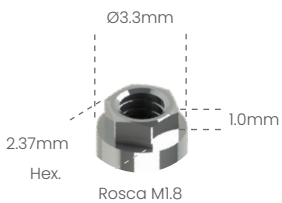


Parafuso
de Fixação

- M18HX
- M18QU



Análogo
100102



Transfer mold.
Aberta
200102A



Transfer mold.
Fechada
200102B



Cicatrizador



300102B	H2mm
300102C	H3mm
300102D	H4mm
300102E	H5mm
300102F	H6mm



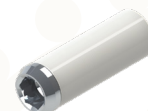
Pilar
Provisório

- 400102C
- 400102S



Ucla
Plástica

- 600102C
- 600102S



Ucla
Base Metálica

- 700102C
- 700102S



Mini pilar
Cônico



800102A	H1mm
800102B	H2mm
800102C	H3mm
800102D	H4mm
800102E	H5mm
800102F	H6mm



Mini Pilar - Âng. 17°

80102BG	H2mm
80102CG	H3mm
80102DG	H4mm



Mini Pilar - Âng. 30°

80102CH	H3mm
80102DH	H4mm



Pilar
O'ring



900102A	H1mm
900102B	H2mm
900102C	H3mm
900102D	H4mm
900102E	H5mm
900102F	H6mm



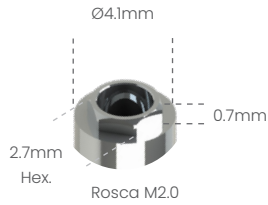
Parafuso
de Fixação

- M18HX
- M18QU



Possibilita a técnica de Plataforma Switching com o Sistema HE 5.0 3i®

Análogo
100105



Transfer mold. Aberta
200105A



Transfer mold. Fechada
200105B



Cicatrizador Tampa
301105



Cicatrizador



300105B	H2mm
300105C	H3mm
300105D	H4mm
300105E	H5mm
300105F	H6mm



Pilar Definitivo

500105A	H1mm
500105B	H2mm
500105C	H3mm
500105D	H4mm



Pilar Provisório

- 400105C
- 400105S



Ucla Plástica

- 600105C
- 600105S



Ucla Base Metálica

- 700105C
- 700105S



Mini pilar Cônico



800105A	H1mm
800105B	H2mm
800105C	H3mm
800105D	H4mm
800105E	H5mm
800105F	H6mm



Pilar Definitivo Ang. 15°

50105AG	H1mm
50105BG	H2mm
50105CG	H3mm



Pilar Definitivo Ang. 25°

50105AH	H1mm
50105BH	H2mm
50105CH	H3mm



Mini Pilar - Âng. 17°

80105BG	H2mm
80105CG	H3mm
80105DG	H4mm



Mini Pilar - Âng. 30°

80105CH	H3mm
80105DH	H4mm



Pilar O'ring



900105A	H1mm
900105B	H2mm
900105C	H3mm
900105D	H4mm
900105E	H5mm
900105F	H6mm



Mini pilar Esteticone



801004A	H1mm
801004B	H2mm
801004C	H3mm
801004D	H4mm
801004E	H5mm
801004F	H6mm



Parafuso de Fixação

- M20HX
- M20QU



Análogo

100102



Transfer mold.
Aberta

200102A



Transfer mold.
Fechada

200102B



Cicatrizador



300102B	H2mm
300102C	H3mm
300102D	H4mm
300102E	H5mm
300102F	H6mm



Pilar
Provisório

400102C

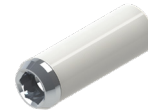
400102S



Ucla
Plástica

600102C

600102S



Ucla
Base Metálica

700102C

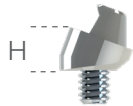
700102S



Mini pilar
Cônico



800102A	H1mm
800102B	H2mm
800102C	H3mm
800102D	H4mm
800102E	H5mm
800102F	H6mm



Mini Pilar - Âng. 17°



80102BG	H2mm
80102CG	H3mm
80102DG	H4mm

Mini Pilar - Âng. 30°



80102CH	H3mm
80102DH	H4mm



Pilar
O'ring



900102A	H1mm
900102B	H2mm
900102C	H3mm
900102D	H4mm
900102E	H5mm
900102F	H6mm



Parafuso
de Fixação

M18HX

M18QU



Análogo

101005



Ø4.8mm



Rosca M1.4



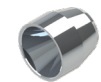
Transfer mold.
Aberta

201005A



Transfer mold.
Fechada

201005B



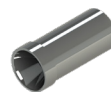
Tampa
de Proteção

301005



Pilar
Provisório

401005



Ø3.18mm



Barra de Titânio
3.18mm

T03180136

Pilar
P/ Solda

401005E (Solda)

Ø0.8mm



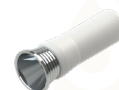
Fio de Titânio
0.80mm

T00800136



Coping
Plástico

601005



Ucla Base
Metálica

701005



Parafuso
de Fixação

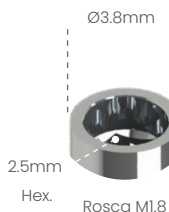
M14MU



Sistema Conexão Interna

-
-
-
-
-

Análogo
100316



Transfer mold.
Aberta
200316A



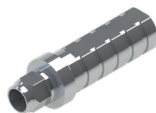
Transfer mold.
Fechada
200316B



Cicatrizador



300307B	H2mm
300307C	H3mm
300307D	H4mm
300307E	H5mm
300307F	H6mm



Pilar
Provisório

- 400316C
- 400316S

Possibilita a técnica de Plataforma Switching com o Sistema HI 4.5/5.0 SIN® e Sistema HI 3.75 a 5.0 Conexão®



Ucla
Plástica

- 600316C
- 600316S



Ucla
Base Metálica

- 700316C
- 700316S



Mini pilar
Cônico



800316A	H1mm
800316B	H2mm
800316C	H3mm
800316D	H4mm
800316E	H5mm
800316F	H6mm



Mini Pilar - Âng. 17°

80316BG	H2mm
80316CG	H3mm
80316DG	H4mm



Mini Pilar - Âng. 30°

80316CH	H3mm
80316DH	H4mm



Pilar
O'Ring



900316A	H1mm
900316B	H2mm
900316C	H3mm
900316D	H4mm
900316E	H5mm
900316F	H6mm

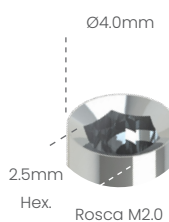


Parafuso
de Fixação

- M18HCN
- M18QCN



Análogo
100204



Transfer mold.
Aberta
200204A



Transfer mold.
Fechada
200204B



Cicatrizador



300204B	H2mm
300204C	H3mm
300204D	H4mm
300204E	H5mm
300204F	H6mm



Pilar
Provisório

- 400204C
- 400204S



Ucla
Plástica

- 600204C
- 600204S



Ucla
Base Metálica

- 700204C
- 700204S



Mini pilar
Cônico



800204A	H1mm
800204B	H2mm
800204C	H3mm
800204D	H4mm
800204E	H5mm
800204F	H6mm



Mini Pilar - Âng. 17°

80204BG	H2mm
80204CG	H3mm
80204DG	H4mm



Mini Pilar - Âng. 30°

80204CH	H3mm
80204DH	H4mm



Pilar
O'Ring



900204A	H1mm
900204B	H2mm
900204C	H3mm
900204D	H4mm
900204E	H5mm
900204F	H6mm

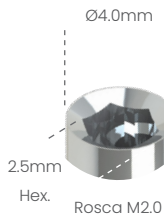


Parafuso
de Fixação

- M20HX
- M20QU



Análogo
100204



Transfer mold.
Aberta
200204A



Transfer mold.
Fechada
200204B



Cicatrizador



300204B	H2mm
300204C	H3mm
300204D	H4mm
300204E	H5mm
300204F	H6mm



Pilar
Provisório

- 400204C
- 400204S



Ucla
Plástica

- 600204C
- 600204S



Ucla
Base Metálica

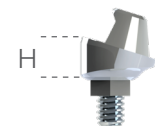
- 700204C
- 700204S



Mini pilar
Cônico



800204A	H1mm
800204B	H2mm
800204C	H3mm
800204D	H4mm
800204E	H5mm
800204F	H6mm



Mini Pilar - Âng. 17°

80204BG	H2mm
80204CG	H3mm
80204DG	H4mm



Mini Pilar - Âng. 30°

80204CH	H3mm
80204DH	H4mm



Pilar
O'Ring



900204A	H1mm
900204B	H2mm
900204C	H3mm
900204D	H4mm
900204E	H5mm
900204F	H6mm

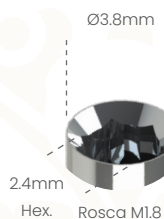


Parafuso
de Fixação

- M20HX
- M20QU



Análogo
100800



Transfer mold.
Aberta
200800A



Transfer mold.
Fechada
200800B



Cicatrizador



Ø4.0	
300800B	H2mm
300800C	H3mm
300800D	H4mm
300800E	H5mm
300800F	H6mm



Cicatrizador



Ø4.8	
300803B	H2mm
300803C	H3mm
300803D	H4mm
300803E	H5mm
300803F	H6mm



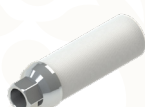
Pilar
Provisório

- 400800C
- 400800S



Ucla
Plástica

- 600800C
- 600800S



Ucla
Base Metálica

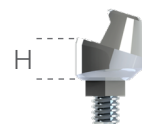
- 700800C
- 700800S



Mini pilar
Cônico



800800A	H1mm
800800B	H2mm
800800C	H3mm
800800D	H4mm
800800E	H5mm
800800F	H6mm



Mini Pilar - Âng. 17°

80800BG	H2mm
80800CG	H3mm
80800DG	H4mm



Mini Pilar - Âng. 30°

80800CH	H3mm
80800DH	H4mm

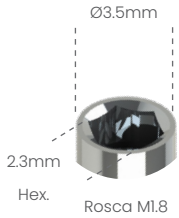


Parafuso
de Fixação

- M18HI



Análogo
100208



Transfer mold.
Aberta
200208A



Transfer mold.
Fechada
200208B



Cicatrizador
20 N.cm

300208B	H2mm
300208C	H3mm
300208D	H4mm
300208E	H5mm
300208F	H6mm



Pilar
Provisório
400208C
400208S



Ucla
Plástica
600208C
600208S



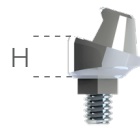
Ucla
Base Metálica
700208C
700208S



Mini pilar
Cônico

20 N.cm

800208A	H1mm
800208B	H2mm
800208C	H3mm
800208D	H4mm
800208E	H5mm
800208F	H6mm



Mini Pilar - Âng. 17°

20 N.cm

80208BG	H2mm
80208CG	H3mm
80208DG	H4mm



Mini Pilar - Âng. 30°

80208CH	H3mm
80208DH	H4mm



Pilar
O'ring

20 N.cm

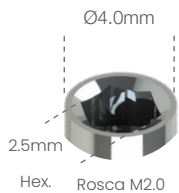
900208A	H1mm
900208B	H2mm
900208C	H3mm
900208D	H4mm



Parafuso
de Fixação
M18HX
M18QU

20 N.cm

Análogo
100209



Transfer mold.
Aberta
200209A



Transfer mold.
Fechada
200209B



Cicatrizador
20 N.cm

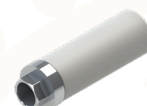
300209B	H2mm
300209C	H3mm
300209D	H4mm
300209E	H5mm
300209F	H6mm



Pilar
Provisório
400209C
400209S



Ucla
Plástica
600209C
600209S



Ucla
Base Metálica
700209C
700209S



Mini pilar
Cônico

32 N.cm

800209A	H1mm
800209B	H2mm
800209C	H3mm
800209D	H4mm
800209E	H5mm
800209F	H6mm



Mini Pilar - Âng. 17°

20 N.cm

80209BG	H2mm
80209CG	H3mm
80209DG	H4mm



Mini Pilar - Âng. 30°

80209CH	H3mm
80209DH	H4mm



Pilar
O'ring

20 N.cm

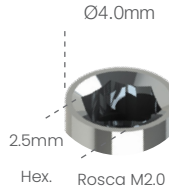
900209A	H1mm
900209B	H2mm
900209C	H3mm
900209D	H4mm



Parafuso
de Fixação
M20HX
M20QU

32 N.cm

Análogo
100209



Transfer mold.
Aberta
200209A



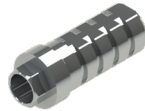
Transfer mold.
Fechada
200209B



Cicatrizador



300209B	H2mm
300209C	H3mm
300209D	H4mm
300209E	H5mm
300209F	H6mm



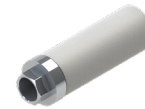
Pilar
Provisório

- 400209C
- 400209S



Ucla
Plástica

- 600209C
- 600209S



Ucla
Base Metálica

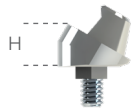
- 700209C
- 700209S



Mini pilar
Cônico



800209A	H1mm
800209B	H2mm
800209C	H3mm
800209D	H4mm
800209E	H5mm
800209F	H6mm



Mini Pilar - Âng. 17°



80209BG	H2mm
80209CG	H3mm
80209DG	H4mm

Mini Pilar - Âng. 30°

80209CH	H3mm
80209DH	H4mm



Pilar
O'ring



900209A	H1mm
900209B	H2mm
900209C	H3mm
900209D	H4mm



Parafuso
de Fixação

- M20HX
- M20QU



Análogo
100316



Transfer mold.
Aberta
200316A



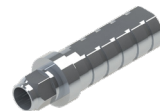
Transfer mold.
Fechada
200316B



Cicatrizador



300307B	H2mm
300307C	H3mm
300307D	H4mm
300307E	H5mm
300307F	H6mm



Pilar
Provisório

- 400316C
- 400316S



Ucla
Plástica

- 600316C
- 600316S



Ucla
Base Metálica

- 700316C
- 700316S



Mini pilar
Cônico



800316A	H1mm
800316B	H2mm
800316C	H3mm
800316D	H4mm
800316E	H5mm
800316F	H6mm



Mini Pilar - Âng. 17°



80316BG	H2mm
80316CG	H3mm
80316DG	H4mm

Mini Pilar - Âng. 30°

80316CH	H3mm
80316DH	H4mm



Pilar
O'ring



900316A	H1mm
900316B	H2mm
900316C	H3mm
900316D	H4mm
900316E	H5mm
900316F	H6mm

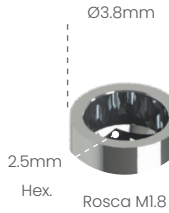


Parafuso
de Fixação

- M18HCN
- M18QCN



Análogo
100316



Transfer mold.
Aberta
200316A



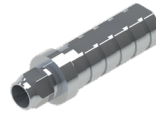
Transfer mold.
Fechada
200316B



Cicatrizador



300307B	H2mm
300307C	H3mm
300307D	H4mm
300307E	H5mm
300307F	H6mm



Pilar
Provisório

- 400316C
- 400316S



Ucla
Plástica

- 600316C
- 600316S



Ucla
Base Metálica

- 700316C
- 700316S



Mini pilar
Cônico



800316A	H1mm
800316B	H2mm
800316C	H3mm
800316D	H4mm
800316E	H5mm
800316F	H6mm

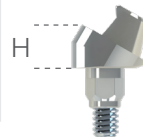


Mini Pilar - Âng. 17°

80316BG	H2mm
80316CG	H3mm
80316DG	H4mm

Mini Pilar - Âng. 30°

80316CH	H3mm
80316DH	H4mm



Pilar
O'Ring



900316A	H1mm
900316B	H2mm
900316C	H3mm
900316D	H4mm
900316E	H5mm
900316F	H6mm

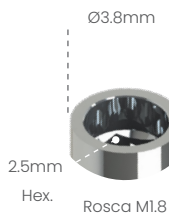


Parafuso
de Fixação

- M18HCN
- M18QCN



Análogo
100316



Transfer mold.
Aberta
200316A



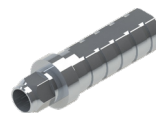
Transfer mold.
Fechada
200316B



Cicatrizador



300307B	H2mm
300307C	H3mm
300307D	H4mm
300307E	H5mm
300307F	H6mm



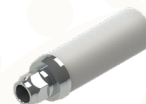
Pilar
Provisório

- 400316C
- 400316S



Ucla
Plástica

- 600316C
- 600316S



Ucla
Base Metálica

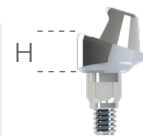
- 700316C
- 700316S



Mini pilar
Cônico



800316A	H1mm
800316B	H2mm
800316C	H3mm
800316D	H4mm
800316E	H5mm
800316F	H6mm

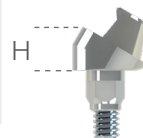


Mini Pilar - Âng. 17°

80316BG	H2mm
80316CG	H3mm
80316DG	H4mm

Mini Pilar - Âng. 30°

80316CH	H3mm
80316DH	H4mm



Pilar
O'Ring



900316A	H1mm
900316B	H2mm
900316C	H3mm
900316D	H4mm
900316E	H5mm
900316F	H6mm



Parafuso
de Fixação

- M18HCN
- M18QCN



Análogo
100113



Ø4.0mm

2.4mm
Hex. Rosca M1.8



Transfer mold.
Aberta
200113A



Transfer mold.
Fechada
200113B



Cicatrizador



300113B	H2mm
300113C	H3mm
300113D	H4mm
300113E	H5mm
300113F	H6mm



Pilar
Provisório

400113C
400113S

Possibilita a técnica de Plataforma Switching com o Sistema HI 5.0 Titanium Fix®



Ucla
Plástica

600113C
600113S



Ucla
Base Metálica

700113C
700113S



Mini pilar
Cônico



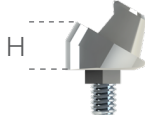
800113A	H1mm
800113B	H2mm
800113C	H3mm
800113D	H4mm
800113E	H5mm
800113F	H6mm



Mini Pilar - Âng. 17°



80113BG	H2mm
80113CG	H3mm
80113DG	H4mm



Mini Pilar - Âng. 30°

80113CH	H3mm
80113DH	H4mm



Parafuso
de Fixação

M18HX
M18QU



Análogo
100799



Ø3.3mm

2.10mm
Hex. Rosca M1.6



Transfer mold.
Aberta
200799A



Transfer mold.
Fechada
200799B



Cicatrizador



300799B	H2mm
300799C	H3mm
300799D	H4mm
300799E	H5mm
300799F	H6mm



Mini pilar
Cônico



800799A	H1mm
800799B	H2mm
800799C	H3mm
800799D	H4mm
800799E	H5mm
800799F	H6mm

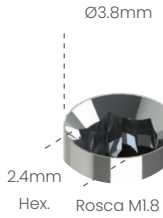


Parafuso
de Fixação

M16HMI



Análogo
100800



Transfer mold.
Aberta
200800A



Transfer mold.
Fechada
200800B



Cicatrizador



Ø4.0	
300800B	H2mm
300800C	H3mm
300800D	H4mm
300800E	H5mm
300800F	H6mm



Cicatrizador



Ø4.8	
300803B	H2mm
300803C	H3mm
300803D	H4mm
300803E	H5mm
300803F	H6mm



Pilar
Provisório

- 400800C
- 400800S



Ucla
Plástica

- 600800C
- 600800S



Ucla
Base Metálica

- 700800C
- 700800S



Mini pilar
Cônico



800800A	H1mm
800800B	H2mm
800800C	H3mm
800800D	H4mm
800800E	H5mm
800800F	H6mm



Mini Pilar - Âng. 17°

80800BG	H2mm
80800CG	H3mm
80800DG	H4mm

Mini Pilar - Âng. 30°

80800CH	H3mm
80800DH	H4mm



Parafuso
de Fixação

- M18HMI



Análogo
101005



Transfer
mold. Aberta
201005A



Transfer
mold. Fechada
201005B



Tampa
de Proteção

301005



Pilar
Provisório

- 401005



Barra de Titânio
3.18mm
T03180136

Pilar
P/ Solda

401005E (Solda)

Ø0.8mm

Fio de Titânio
0.80mm
T00800136



Coping
Plástico

601005



Ucla Base
Metálica

701005



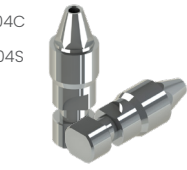
Parafuso
de Fixação

- M14MU



Análogo

-  101004C
-  101004S



Ø4.8mm
3.3mm
Hex.



Rosca M1.4



Transfer mold.
Aberta

-  20104CA



Transfer mold.
Aberta



-  20104SA



Cicatrizador
301004



Pilar
Provisório

-  401004C
-  401004S





Coping
Plástico

-  601004C
-  601004S



Ucla
Base Metálica

-  701004C
-  701004S



Parafuso
de Fixação

-  M1.4ES

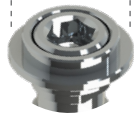


Uclafix



Uclafix

Ø3.5mm



Chave Hex. 1.2mm
Parafuso M1.4



CÓDIGO

INFORMAÇÕES TÉCNICAS

701006

A Uclafix é um componente protético que permite reabilitar com sucesso casos onde o parafuso sairia por vestibular ou incisal, através da fixação do coping sobre o pilar personalizado, substituindo assim a cimentação.

Portanto, em casos críticos, devido a posição desfavorável do implante, a Uclafix trará uma solução estética e funcional.





O'ring Calcinável

804105



Anel Calcinável

805105



Barra Calcinável

BARRA



Clip para Overdenture

CLIPTEC



Clip 0°

CLIP0



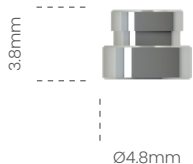
Clip 35°

CLIP35



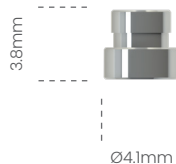
Clip 70°

CLIP70



Cápsula Metálica O'ring

802105



Cápsula Metálica O'ring Mini

802105M



Anel O'ring para Cápsula Metálica

ORING2



Anel O'ring para Cápsula Metálica Mini

ORING3



Cápsula Plástica

803105

CHAVE DIGITAL

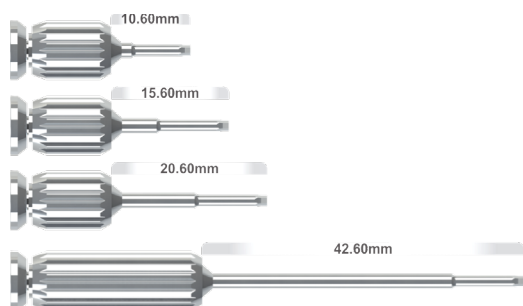
	Curta	Média	Longa	Extra Longa
Fenda	CDFC	CDFM	CDFL	-
Hexagonal 0.9mm	CDH09C	CDH09M	CDH09L	-
Hexagonal 1.2mm	CDH12C	CDH12M	CDH12L	CDH12EL
Quadrada 1.3mm	CDQ13C	CDQ13M	CDQ13L	CDQ13EL
Torx	CDSTC	CDSTM	CDSTL	CDSTEL
Unigrip	CDUGC	CDUGM	CDUGL	CDUGEL
Dinâmica	CDDIC	CDDIM	CDDIL	-

GM

QUADRADA

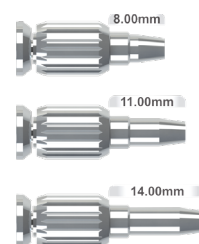
DINÂMICA

HEXAGONAL



CHAVE DIGITAL MULT UNIT

Curta	Média	Longa	Extra Longa
CDMUC	CDMUM	CDMUL	-

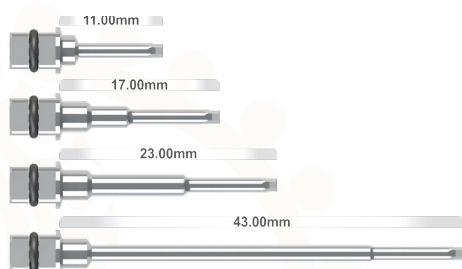
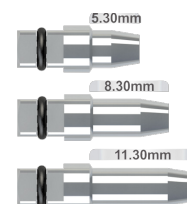


CHAVE TORQUÍMETRO

	Curta	Média	Longa	Extra Longa
Hexagonal 0.9mm	CTH09C	CTH09M	CTH09L	-
Hexagonal 1.2mm	CTH12C	CTH12M	CTH12L	CTH12EL
Hexagonal 1.6mm	CTH16C	CTH16M	CTH16L	-
Quadrada 1.3mm	CTQ13C	CTQ13M	CTQ13L	CTQ13EL
Torx	CTSTC	CTSTM	CTSTL	CTSTEL
Unigrip	CTUGC	CTUGM	CTUGL	-
Dinâmica	CTDIC	CTDIM	CTDIL	-

CHAVE TORQUÍMETRO MULT UNIT

Curta	Média	Longa	Extra Longa
CTMUC	CTMUM	CTMUL	-



MAIS INSTRUMENTAIS



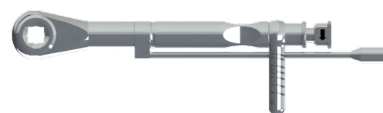
Adaptador Digital Quadrado

ADQCT



Saca Implante

SIMP



Torquímetro 10 a 80 Ncm

TORQ



ESTAMOS SEMPRE À DISPOSIÇÃO,
ENTRE EM CONTATO E TIRE SUAS DÚVIDAS.

