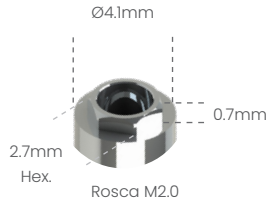


Possibilita a técnica de Plataforma Switching com o Sistema HE 5.0 3i®

**Análogo**  
100105



**Transfer mold. Aberta**  
200105A



**Transfer mold. Fechada**  
200105B



**Cicatrizador Tampa**  
301105



**Cicatrizador**

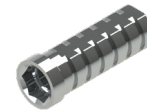


300105B	H2mm
300105C	H3mm
300105D	H4mm
300105E	H5mm
300105F	H6mm



**Pilar Definitivo**

500105A	H1mm
500105B	H2mm
500105C	H3mm
500105D	H4mm



**Pilar Provisório**

- 400105C
- 400105S



**Ucla Plástica**

- 600105C
- 600105S



**Ucla Base Metálica**

- 700105C
- 700105S



**Mini pilar Cônico**



800105A	H1mm
800105B	H2mm
800105C	H3mm
800105D	H4mm
800105E	H5mm
800105F	H6mm



**Pilar Definitivo Ang. 15°**

50105AG	H1mm
50105BG	H2mm
50105CG	H3mm



**Pilar Definitivo Ang. 25°**

50105AH	H1mm
50105BH	H2mm
50105CH	H3mm



**Mini Pilar - Âng. 17°**

80105BG	H2mm
80105CG	H3mm
80105DG	H4mm



**Mini Pilar - Âng. 30°**

80105CH	H3mm
80105DH	H4mm



**Pilar O'ring**



900105A	H1mm
900105B	H2mm
900105C	H3mm
900105D	H4mm
900105E	H5mm
900105F	H6mm



**Mini pilar Esteticone**



801004A	H1mm
801004B	H2mm
801004C	H3mm
801004D	H4mm
801004E	H5mm
801004F	H6mm



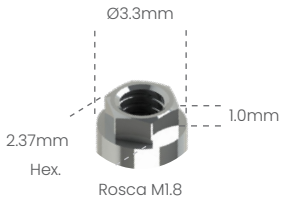
**Parafuso de Fixação**

- M20HX
- M20QU



Análogo

100102



Transfer mold.  
Aberta

200102A



Transfer mold.  
Fechada

200102B



Cicatrizador



300102B H2mm

300102C H3mm

300102D H4mm

300102E H5mm

300102F H6mm



Pilar  
Provisório

400102C

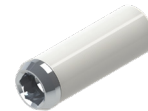
400102S



Ucla  
Plástica

600102C

600102S



Ucla  
Base Metálica

700102C

700102S



Mini pilar  
Cônico



800102A H1mm

800102B H2mm

800102C H3mm

800102D H4mm

800102E H5mm

800102F H6mm



Mini Pilar - Âng. 17°

80102BG H2mm

80102CG H3mm

80102DG H4mm



Mini Pilar - Âng. 30°

80102CH H3mm

80102DH H4mm



Parafuso  
de Fixação

M18HX

M18QU

