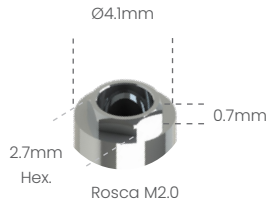


Possibilita a técnica de Plataforma Switching com o Sistema HE 5.0 3i®

**Análogo**

100105



**Transfer mold. Aberta**

200105A



**Transfer mold. Fechada**

200105B



**Cicatrizador Tampa**

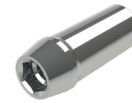
301105



**Cicatrizador**

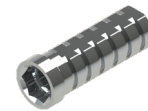


300105B	H2mm
300105C	H3mm
300105D	H4mm
300105E	H5mm
300105F	H6mm



**Pilar Definitivo**

500105A	H1mm
500105B	H2mm
500105C	H3mm
500105D	H4mm



**Pilar Provisório**

- 400105C
- 400105S



**Ucla Plástica**

- 600105C
- 600105S



**Ucla Base Metálica**

- 700105C
- 700105S



**Mini pilar Cônico**



800105A	H1mm
800105B	H2mm
800105C	H3mm
800105D	H4mm
800105E	H5mm
800105F	H6mm



**Pilar Definitivo Ang. 15°**

50105AG	H1mm
50105BG	H2mm
50105CG	H3mm



**Pilar Definitivo Ang. 25°**

50105AH	H1mm
50105BH	H2mm
50105CH	H3mm



**Mini Pilar – Âng. 17°**

80105BG	H2mm
80105CG	H3mm
80105DG	H4mm



**Mini Pilar – Âng. 30°**

80105CH	H3mm
80105DH	H4mm



**Pilar O'ring**



900105A	H1mm
900105B	H2mm
900105C	H3mm
900105D	H4mm
900105E	H5mm
900105F	H6mm



**Mini pilar Esteticone**



801004A	H1mm
801004B	H2mm
801004C	H3mm
801004D	H4mm
801004E	H5mm
801004F	H6mm



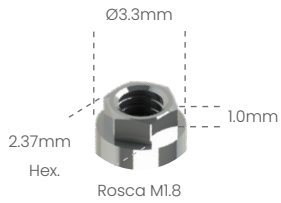
**Parafuso de Fixação**

- M20HX
- M20QU



**Análogo**

100102



**Transfer mold.  
Aberta**

200102A



**Transfer mold.  
Fechada**

200102B



**Cicatrizador**



300102B	H2mm
300102C	H3mm
300102D	H4mm
300102E	H5mm
300102F	H6mm



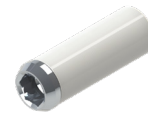
**Pilar  
Provisório**

- 400102C
- 400102S



**Ucla  
Plástica**

- 600102C
- 600102S



**Ucla  
Base Metálica**

- 700102C
- 700102S



**Mini pilar  
Cônico**



800102A	H1mm
800102B	H2mm
800102C	H3mm
800102D	H4mm
800102E	H5mm
800102F	H6mm



**Mini Pilar – Âng. 17°**



80102BG	H2mm
80102CG	H3mm
80102DG	H4mm



**Mini Pilar – Âng. 30°**

80102CH	H3mm
80102DH	H4mm



**Pilar  
O'ring**



900102A	H1mm
900102B	H2mm
900102C	H3mm
900102D	H4mm
900102E	H5mm
900102F	H6mm



**Parafuso  
de Fixação**

- M18HX
- M18QU

