

Possibilita a técnica de Plataforma Switching com o Sistema HE 5.0 3j®

Análogo

100105



Ø4.1mm

2.7mm
Hex.

Rosca M2.0

0.7mm



**Transfer mold.
Aberta**

200105A



**Transfer mold.
Fechada**

200105B



**Cicatrizador
Tampa**

301105



Cicatrizador

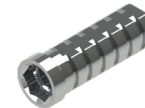


300105B	H2mm
300105C	H3mm
300105D	H4mm
300105E	H5mm
300105F	H6mm



**Pilar
Definitivo**

500105A	H1mm
500105B	H2mm
500105C	H3mm
500105D	H4mm



**Pilar
Provisório**

- 400105C
- 400105S



**Ucla
Plástica**

- 600105C
- 600105S



**Ucla
Base Metálica**

- 700105C
- 700105S



**Mini pilar
Cônico**



800105A	H1mm
800105B	H2mm
800105C	H3mm
800105D	H4mm
800105E	H5mm
800105F	H6mm



Pilar Definitivo Ang. 15°

50105AG	H1mm
50105BG	H2mm
50105CG	H3mm



Pilar Definitivo Ang. 25°

50105AH	H1mm
50105BH	H2mm
50105CH	H3mm



Mini Pilar - Âng. 17°

80105BG	H2mm
80105CG	H3mm
80105DG	H4mm



Mini Pilar - Âng. 30°

80105CH	H3mm
80105DH	H4mm



Pilar O'ring



900105A	H1mm
900105B	H2mm
900105C	H3mm
900105D	H4mm
900105E	H5mm
900105F	H6mm



**Mini pilar
Esteticone**



801004A	H1mm
801004B	H2mm
801004C	H3mm
801004D	H4mm
801004E	H5mm
801004F	H6mm



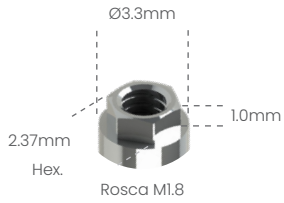
**Parafuso
de Fixação**

- M20HX
- M20QU



Análogo

100102



**Transfer mold.
Aberta**

200102A



**Transfer mold.
Fechada**

200102B



Cicatrizador



300102B	H2mm
300102C	H3mm
300102D	H4mm
300102E	H5mm
300102F	H6mm



**Pilar
Provisório**

- 400102C
- 400102S



**Ucla
Plástica**

- 600102C
- 600102S



**Ucla
Base Metálica**

- 700102C
- 700102S



**Mini pilar
Cônico**



800102A	H1mm
800102B	H2mm
800102C	H3mm
800102D	H4mm
800102E	H5mm
800102F	H6mm



Mini Pilar - Âng. 17°



80102BG	H2mm
80102CG	H3mm
80102DG	H4mm

Mini Pilar - Âng. 30°



80102CH	H3mm
80102DH	H4mm



**Pilar
O'ring**



900102A	H1mm
900102B	H2mm
900102C	H3mm
900102D	H4mm
900102E	H5mm
900102F	H6mm



**Parafuso
de Fixação**

- M18HX
- M18QU

