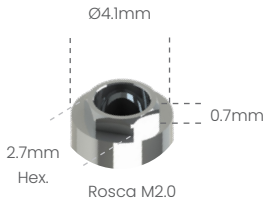


Possibilita a técnica de Plataforma Switching com o Sistema HE 5.0 3i®

Análogo

100105



Transfer mold. Aberta

200105A



Transfer mold. Fechada

200105B



Cicatrizador Tampa

301105



Cicatrizador



300105B	H2mm
300105C	H3mm
300105D	H4mm
300105E	H5mm
300105F	H6mm



Pilar Definitivo

500105A	H1mm
500105B	H2mm
500105C	H3mm
500105D	H4mm



Pilar Provisório

- 400105C
- 400105S



Ucla Plástica

- 600105C
- 600105S



Ucla Base Metálica

- 700105C
- 700105S



Mini pilar Cônico



800105A	H1mm
800105B	H2mm
800105C	H3mm
800105D	H4mm
800105E	H5mm
800105F	H6mm



Pilar Definitivo Ang. 15°

50105AG	H1mm
50105BG	H2mm
50105CG	H3mm



Pilar Definitivo Ang. 25°

50105AH	H1mm
50105BH	H2mm
50105CH	H3mm



Mini Pilar - Âng. 17°

80105BG	H2mm
80105CG	H3mm
80105DG	H4mm



Mini Pilar - Âng. 30°

80105CH	H3mm
80105DH	H4mm



Pilar O'ring



900105A	H1mm
900105B	H2mm
900105C	H3mm
900105D	H4mm
900105E	H5mm
900105F	H6mm



Mini pilar Esteticone



801004A	H1mm
801004B	H2mm
801004C	H3mm
801004D	H4mm
801004E	H5mm
801004F	H6mm



Parafuso de Fixação

- M20HX
- M20QU



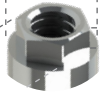
Análogo

100102



Ø3.3mm

2.4mm
Hex.



Rosca M1.8



**Transfer mold.
Aberta**

200103A



**Transfer mold.
Fechada**

200103B



Cicatrizador



300102B H2mm

300102C H3mm

300102D H4mm

300102E H5mm

300102F H6mm



**Pilar
Provisório**

● 400103C

○ 400103S



**Ucla
Plástica**

● 600103C

○ 600103S



**Ucla
Base Metálica**

● 700103C

○ 700103S



**Pilar
Definitivo**

500103A H1mm

500103B H2mm

500103C H3mm

500103D H4mm



**Mini pilar
Cônico**



800102A H1mm

800102B H2mm

800102C H3mm

800102D H4mm

800102E H5mm

800102F H6mm



**Parafuso
de Fixação**

○ M18HX

□ M18QU

