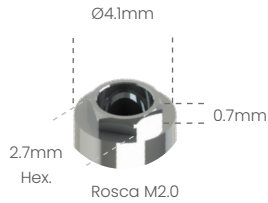


Possibilita a técnica de Plataforma Switching com o Sistema HE 5.0 3i®

Análogo

100105



Transfer mold. Aberta

200105A



Transfer mold. Fechada

200105B



Cicatrizador Tampa

301105



Cicatrizador

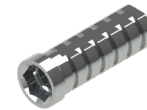


300105B	H2mm
300105C	H3mm
300105D	H4mm
300105E	H5mm
300105F	H6mm



Pilar Definitivo

500105A	H1mm
500105B	H2mm
500105C	H3mm
500105D	H4mm



Pilar Provisório

- 400105C
- 400105S



Ucla Plástica

- 600105C
- 600105S



Ucla Base Metálica

- 700105C
- 700105S



Mini pilar Cônico



800105A	H1mm
800105B	H2mm
800105C	H3mm
800105D	H4mm
800105E	H5mm
800105F	H6mm



Pilar Definitivo Ang. 15°

50105AG	H1mm
50105BG	H2mm
50105CG	H3mm



Pilar Definitivo Ang. 25°

50105AH	H1mm
50105BH	H2mm
50105CH	H3mm



Mini Pilar - Âng. 17°

80105BG	H2mm
80105CG	H3mm
80105DG	H4mm



Mini Pilar - Âng. 30°

80105CH	H3mm
80105DH	H4mm



Pilar O'ring



900105A	H1mm
900105B	H2mm
900105C	H3mm
900105D	H4mm
900105E	H5mm
900105F	H6mm



Mini pilar Esteticone



801004A	H1mm
801004B	H2mm
801004C	H3mm
801004D	H4mm
801004E	H5mm
801004F	H6mm

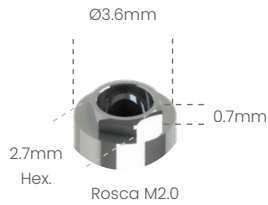


Parafuso de Fixação

- M20HX
- M20QU



Análogo
100108



Transfer mold.
Aberta
200108A



Transfer mold.
Fechada
200108B



Cicatrizador



300108B	H2mm
300108C	H3mm
300108D	H4mm
300108E	H5mm
300108F	H6mm



Pilar
Definitivo

500108A	H1mm
500108B	H2mm
500108C	H3mm
500108D	H4mm



Pilar
Provisório

- 400108C
- 400108S



Ucla
Plástica

- 600108C
- 600108S



Ucla
Base Metálica

- 700108C
- 700108S



Mini pilar
Cônico



800108A	H1mm
800108B	H2mm
800108C	H3mm
800108D	H4mm
800108E	H5mm
800108F	H6mm



Pilar Definitivo Ang. 15°

50108AG	H1mm
50108BG	H2mm
50108CG	H3mm



Pilar Definitivo Ang. 25°

50108AH	H1mm
50108BH	H2mm
50108CH	H3mm



Mini Pilar - Âng. 17°

80108BG	H2mm
80108CG	H3mm
80108DG	H4mm



Mini Pilar - Âng. 30°

80108CH	H3mm
80108DH	H4mm



Parafuso
de Fixação

- M20HX
- M20QU

