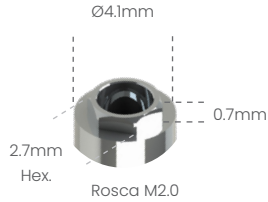


Possibilita a técnica de Plataforma Switching com o Sistema HE 5.0 3i®

Análogo

100105



Transfer mold. Aberta

200105A



Transfer mold. Fechada

200105B



Cicatrizador Tampa

301105



Cicatrizador

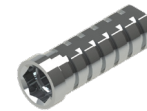


300105B	H2mm
300105C	H3mm
300105D	H4mm
300105E	H5mm
300105F	H6mm



Pilar Definitivo

500105A	H1mm
500105B	H2mm
500105C	H3mm
500105D	H4mm



Pilar Provisório

- 400105C
- 400105S



Ucla Plástica

- 600105C
- 600105S



Ucla Base Metálica

- 700105C
- 700105S



Mini pilar Cônico



800105A	H1mm
800105B	H2mm
800105C	H3mm
800105D	H4mm
800105E	H5mm
800105F	H6mm



Pilar Definitivo Ang. 15°

50105AG	H1mm
50105BG	H2mm
50105CG	H3mm



Pilar Definitivo Ang. 25°

50105AH	H1mm
50105BH	H2mm
50105CH	H3mm



Mini Pilar - Âng. 17°

80105BG	H2mm
80105CG	H3mm
80105DG	H4mm



Mini Pilar - Âng. 30°

80105CH	H3mm
80105DH	H4mm



Pilar O'ring



900105A	H1mm
900105B	H2mm
900105C	H3mm
900105D	H4mm
900105E	H5mm
900105F	H6mm



Mini pilar Esteticone



801004A	H1mm
801004B	H2mm
801004C	H3mm
801004D	H4mm
801004E	H5mm
801004F	H6mm



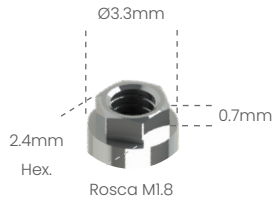
Parafuso de Fixação

- M20HX
- M20QU



Análogo

100102



Transfer mold.
Aberta

200102A



Transfer mold.
Fechada

200102B



Cicatrizador



300102B	H2mm
300102C	H3mm
300102D	H4mm
300102E	H5mm
300102F	H6mm



Pilar
Provisório

- 400102C
- 400102S



Ucla
Plástica

- 600102C
- 600102S



Ucla
Base Metálica

- 700102C
- 700102S



Mini pilar
Cônico



800102A	H1mm
800102B	H2mm
800102C	H3mm
800102D	H4mm
800102E	H5mm
800102F	H6mm



Mini Pilar - Âng. 17°

80102BG	H2mm
80102CG	H3mm
80102DG	H4mm



Mini Pilar - Âng. 30°

80102CH	H3mm
80102DH	H4mm



Pilar
O'ring



900102A	H1mm
900102B	H2mm
900102C	H3mm
900102D	H4mm
900102E	H5mm
900102F	H6mm



Parafuso
de Fixação

- M18HX
- M18QU

